

SOLID WOOD





Engineered Heavy Timber Types



Parallel strand lumber (PSL) is fabricated from long strands of veneer pressed and glued into standard dimensions and lengths. It has very consistent properties and high strength.



Laminated veneer lumber (LVL) is fabricated by laminating and gluing multiple veneers together in the same orientation. This enables long elements to be produced that have high strength in one direction.



Laminated strand lumber (LSL) is fabricated from flaked wood strands glued together in large billets. The length is limited only by standard shipping and trucking dimensions. LSL can be used for floors, walls and vertical members where large floor-to-floor heights are required.

Common types of engineered wood used in columns and beams, comprised of thinner pieces that are able to be made from newer growth trees.

Glue Laminated vs Cross Laminated Timber



Glue-laminated timber (glulam) is fabricated by gluing individual pieces of dimensional lumber together to form columns, beams and headers.

Columns, Beams



Cross-laminated timber (CLT) is created by laminating dimensional lumber in layers that are perpendicular to one another. The resulting panels have two-way spanning capability, are dimensionally stable and are suitable for walls, roofs and floors.

Walls, Floors, Roofs





JOE WINE
MANAGER
2000

63

BOATERS & PRANCO

MARCO
ASHTON, NORTH CAROLINA
1980
U.S.A.

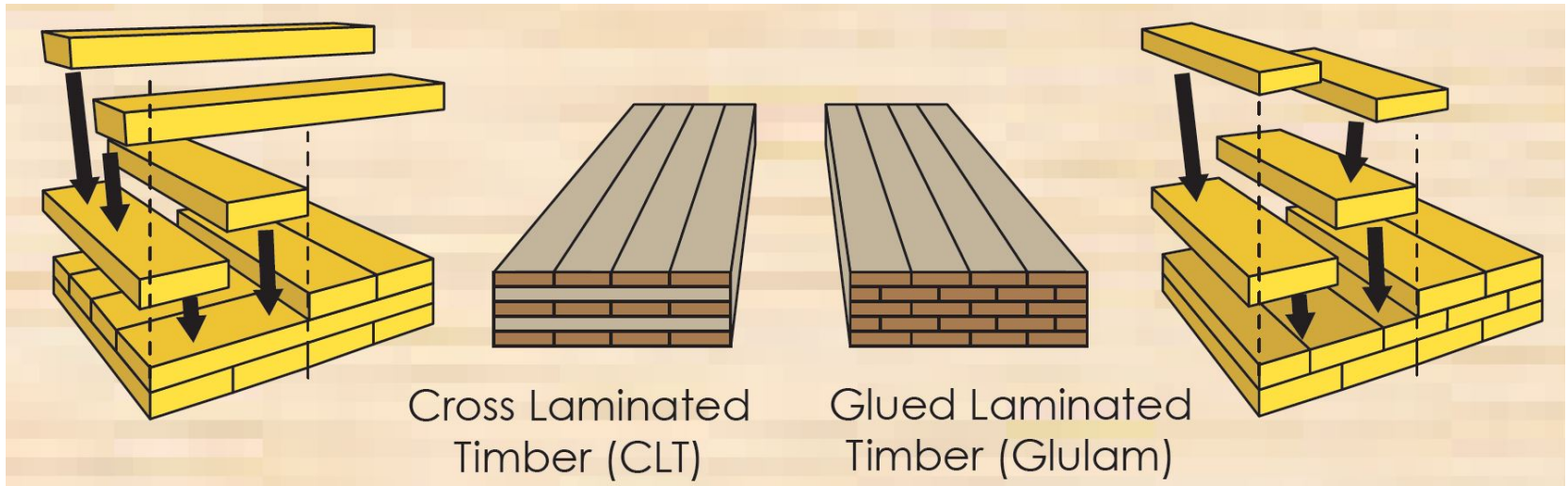




FASCO
AIR DRIVEN TOOLS
F44AC CM15-PS65
LIGNOLOC
Shank: 35 mm / 1.38 in
Length: 50 - 55 mm / 2 - 2.17 in
MAX. PRESS.: 6 BAR (120 PSIG)
MADE IN ITALY
CE 17016615 ▼ 18



What is Cross Laminated Timber



CLT layers



As with normal “plywood” type materials, the number of layers is always odd.

CLT comes in 3 basic thicknesses

- 3 ply
- 5 ply
- 7 ply

The long direction of the pieces runs parallel to the span.

Fire issues

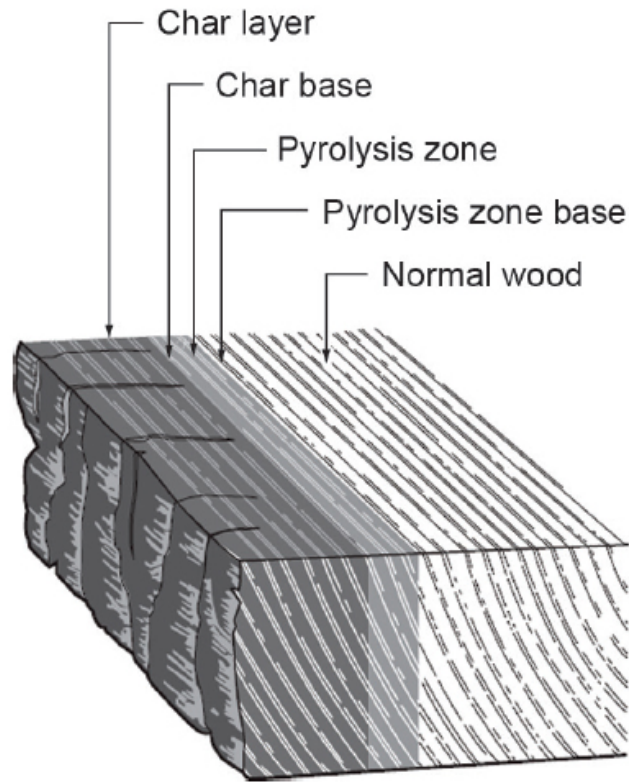


Figure 3.1. Formation of Char layer and pyrolysis zone in wood (one-dimensional) when exposed to high temperatures (CSA, 2011).

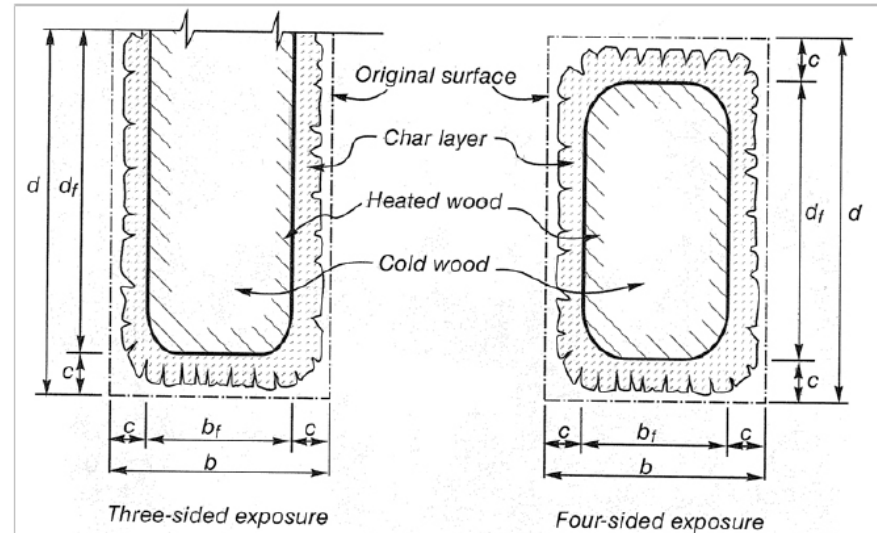


Figure 3.5. Illustration of wood beam or column exposed to fire with the char layer, heated wood layer and cool interior section indicated (Buchanan, 2001).

Large scale wood has better fire resistance than dimension lumber due to the development of a protective char layer.

Fire Resistance Strategies

FULLY EXPOSED

Structural wood elements	Type of Dimension	Minimum Dimensions (mm)
Wall, floor and roof assemblies with 1- sided fire exposure	thickness/ depth	136
Beams, columns and arches with 2-sided or 3-sided fire exposure	cross-section	248 x 248
Beams, columns and arches with 4-sided fire exposure	cross-section	336 x 336

Table 3.1. Summary of minimum dimensions of structural wood elements proposed for mass timber construction if left exposed (Craft, 2016).

GYPSUM COVERED

Structural wood elements	Type of Dimension	Minimum Dimensions (mm)
Wall, floor and roof assemblies with 1- sided fire exposure	thickness/ depth	96
Beams, columns and arches with 2-sided or 3-sided fire exposure	cross-section	192 x 192
Beams, columns and arches with 4-sided fire exposure	cross-section	224 x 224

Table 3.2. Summary of minimum dimensions of structural wood elements proposed for mass timber construction if encapsulated with 2 layers of 12.7 mm Type X gypsum board (Craft, 2016).

Fire resistance strategies

- At present in Canada there is a 6 storey limit to the height of commercial and institutional buildings out of heavy wood
- They must have a sprinkler (fire suppression) system
- Using composite construction (concrete) and cladding the wood with fire rated gypsum board, this can be increased (Brock Commons is 18 storeys)
- Surfaces can be treated with an intumescent coating to provide more than an hour of fire protection (but this obscures the natural look of the wood!)

Fire resistance strategies – Metal Connectors

- CLT fastening systems are usually made of steel, which only has a $\frac{3}{4}$ hour fire rating
- When seeking a higher rating the steel must either be coated with an intumescent if left exposed/expressed/AESS
- OR, if one of the hidden proprietary connecting systems, sitting inside of the connection with up to 75mm of wood cover, as a function of the desired rating.
- Additionally as heat can reach the steel via natural crevices that happen with making connections, there needs to be intumescent tape around the connector that will activate and protect the steel.

Fire protection of connections

R120 &
Burnout



2.5mm intumescent strip -
Intumex L. Expands 20 times at
150 degrees Celsius

MOELVEN

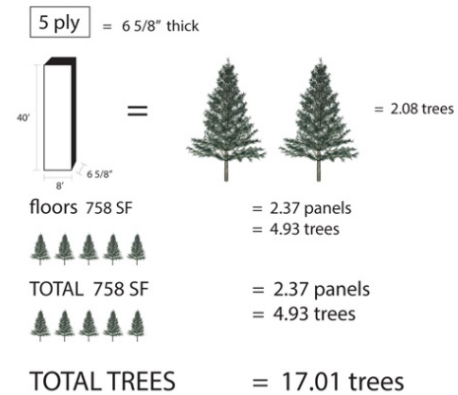
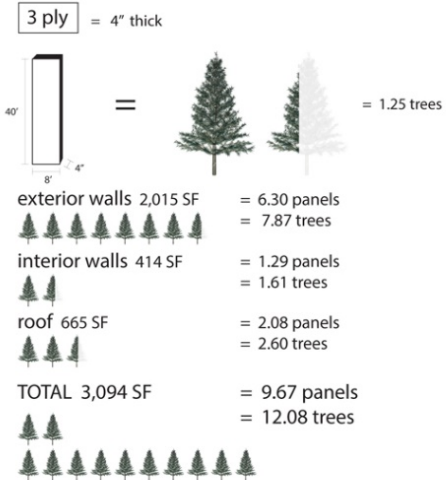
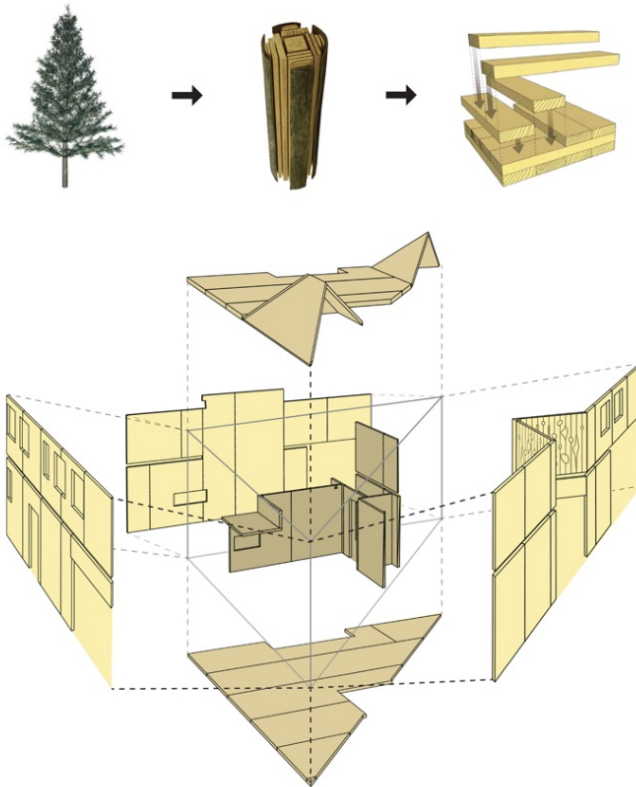


Benefits of CLT

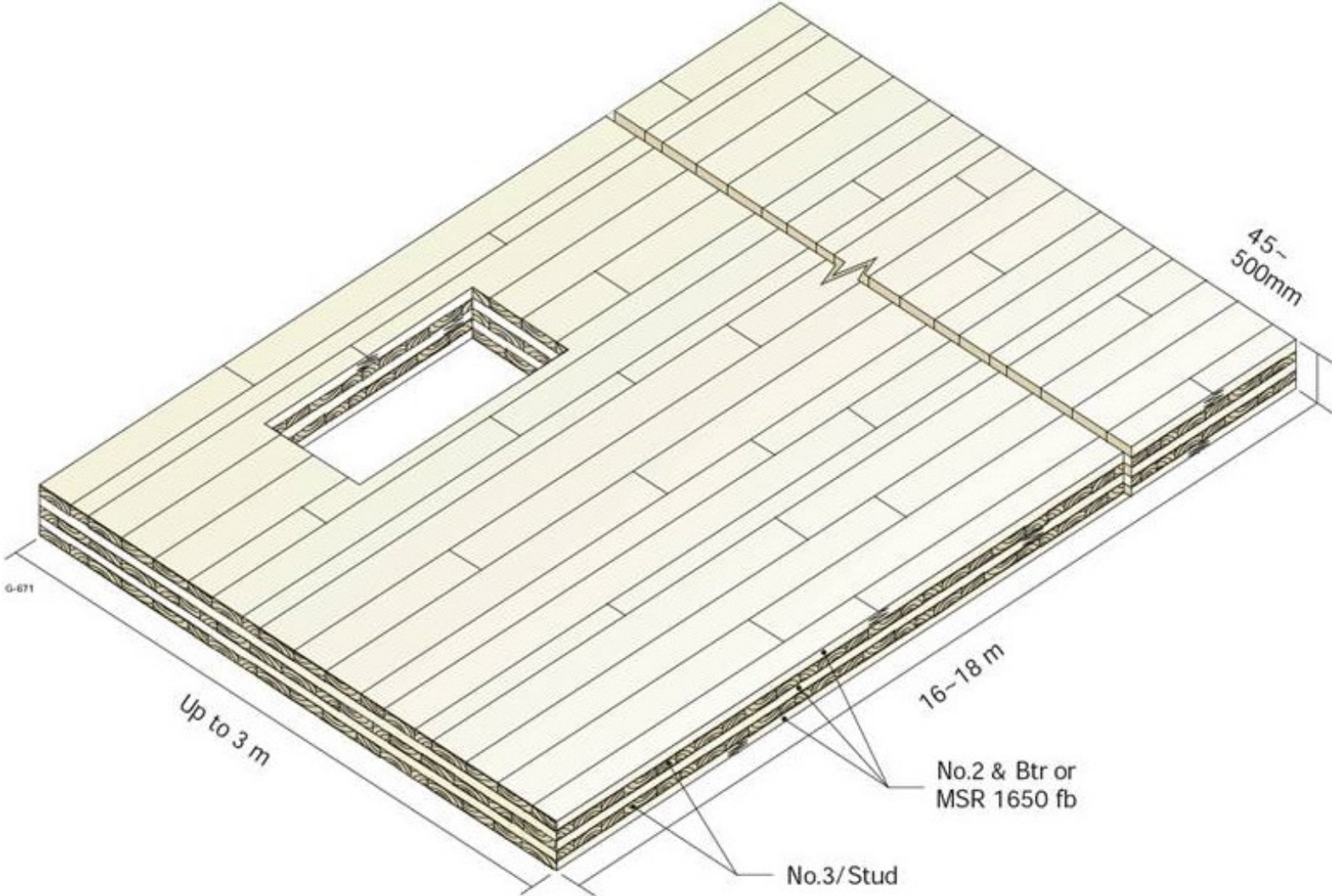
- positive CO₂ balance
- environmentally-friendly and sustainable construction method
- CLT is lighter than concrete or brick
- good insulating properties
- excellent fire safety characteristics
- short set-up time, easy to assemble and high level of prefabrication
- excellent structural properties and dry construction method
- earthquake-proof construction method

Use of wood

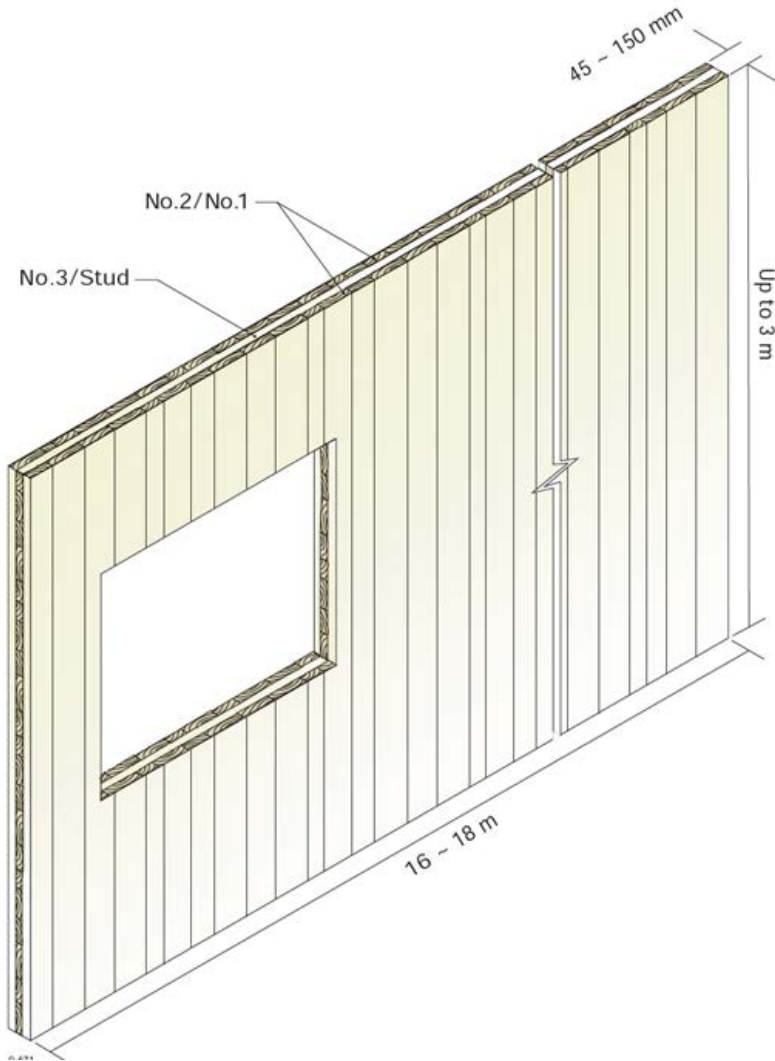
TIMBER DIAGRAM



Floor system



Wall system



- 3 ply wall system.
- Note heights of up to 3m
- Note wall lengths of up to 18m
- Dimensions overall the same as for floor/ceiling slabs BUT the orientation of the wood is changed

Bearing wall system



It is possible to use large CLT panels to create a building with solid bearing walls and relatively clear span floors. Door and window openings usually cut out at the factory.

CLT wall systems



Solid CLT buildings



The decorative cut outs on the wall panels were done at the shop with precise CAD CAM cutting equipment.

It is normal to have a slight round in the “corners” as sharp cut outs are rather difficult to achieve.

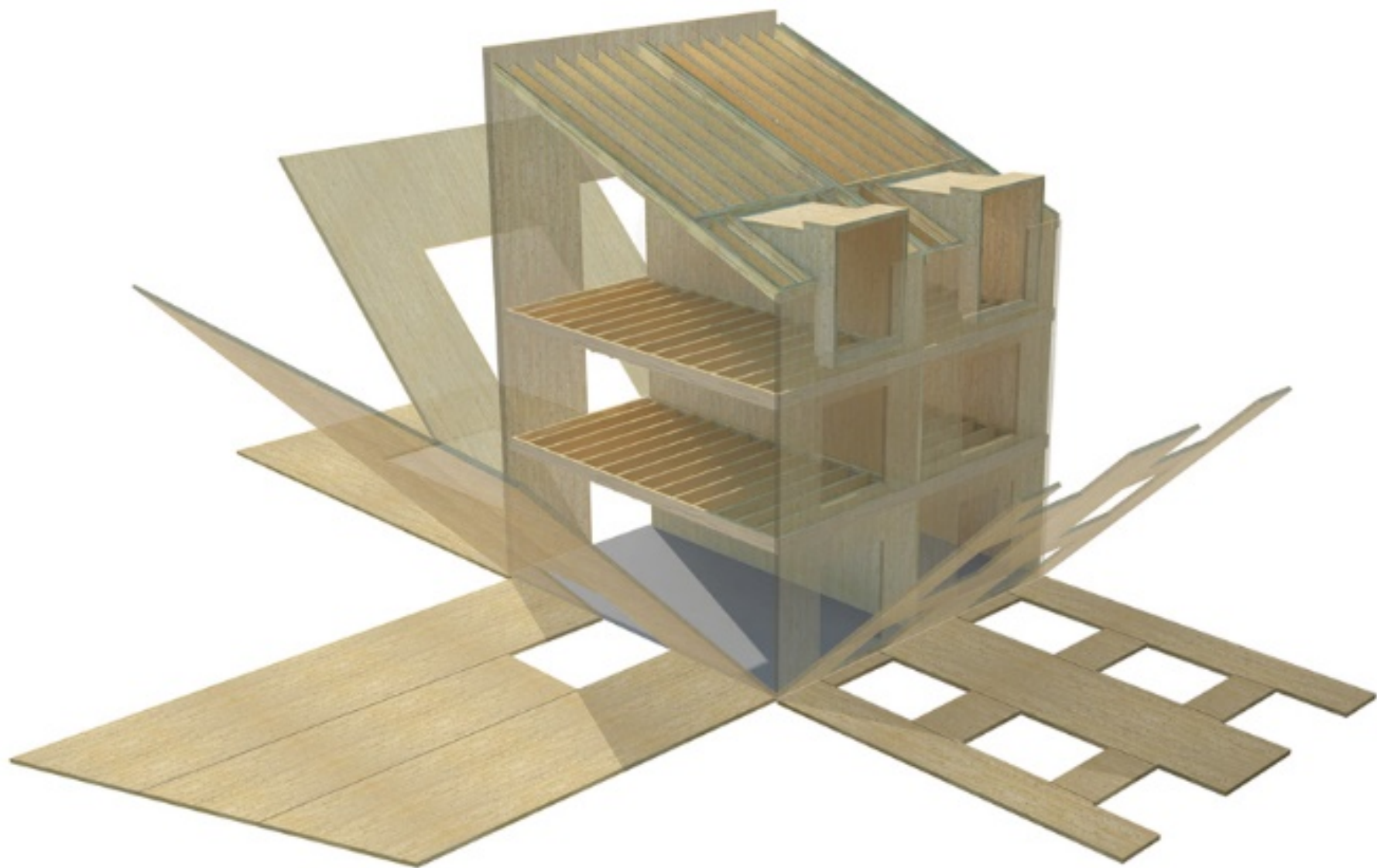
CLT wall systems

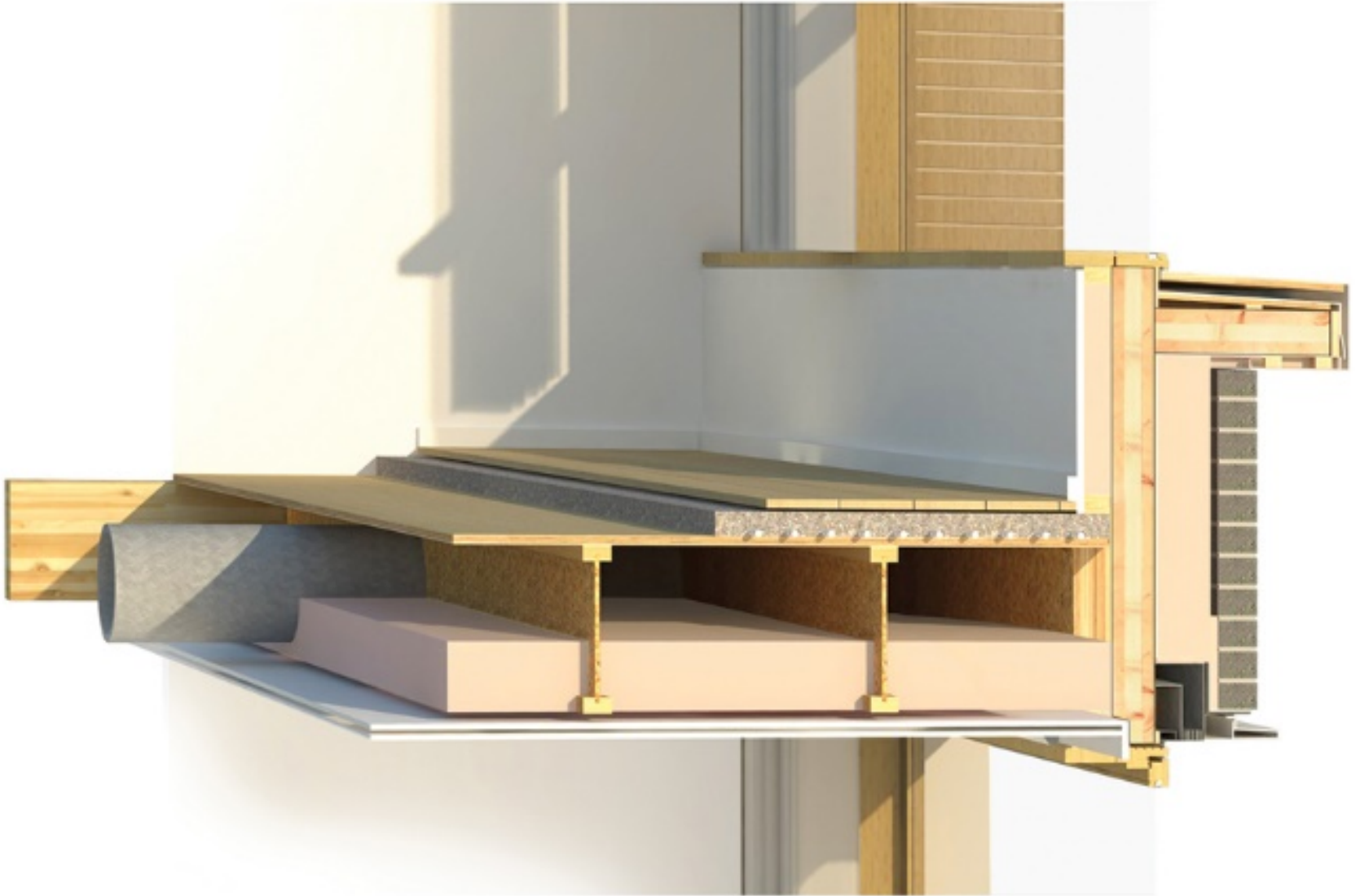


Ronald McDonald House, Vancouver



- By Michael Green Architecture
- Tilt up CLT slab strategy



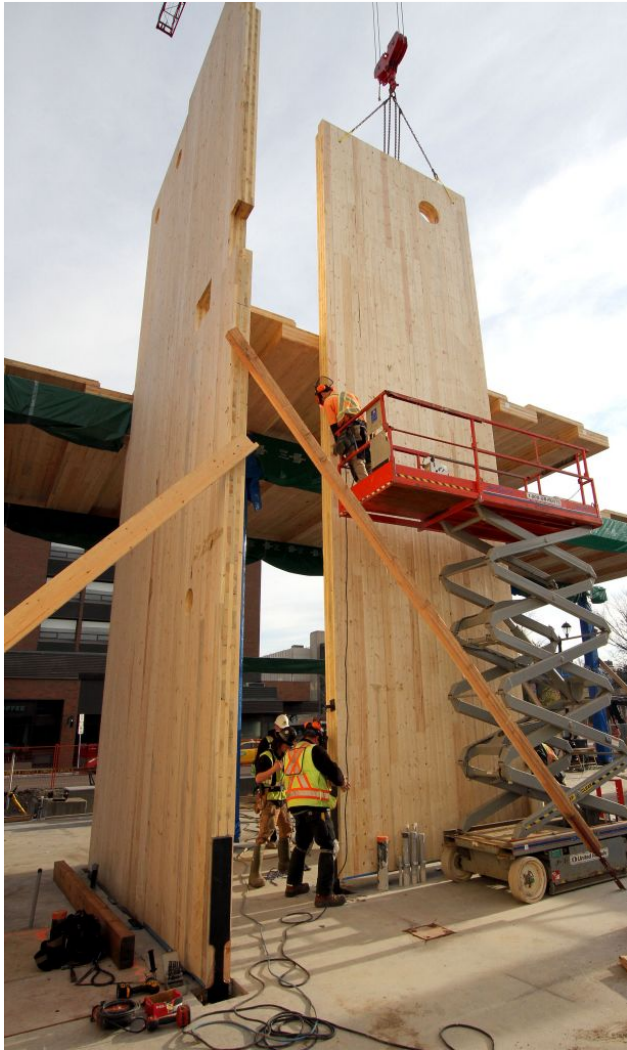


Need for stability



As the majority of the connectors used are equivalent to hinge connections (only able to transfer vertical and horizontal shear forces and NOT moment) it is necessary to add other materials, systems to stiffen the structure.

CLT – lateral stability



- Buildings need lateral stability
- For beam and column type buildings a core is often needed to stabilize
- Can be done with CLT panels to support the core (stairs, elevator shaft)



CLT – lateral stability



Very tall timber structures like Brock Commons use a reinforced concrete core as well as concrete toppings on the CLT floor slabs for stability. This is called COMPOSITE CONSTRUCTION.

CLT – lateral stability



Diagonal bracing or K bracing can also be used to add stability that is also expressive in the reading of the structure.

Fasteners – Megant system



Megant fastener system for beams

The amount of wood outside the fastener will need to be increased as a function of the fire rating.



Fasteners – Megant system

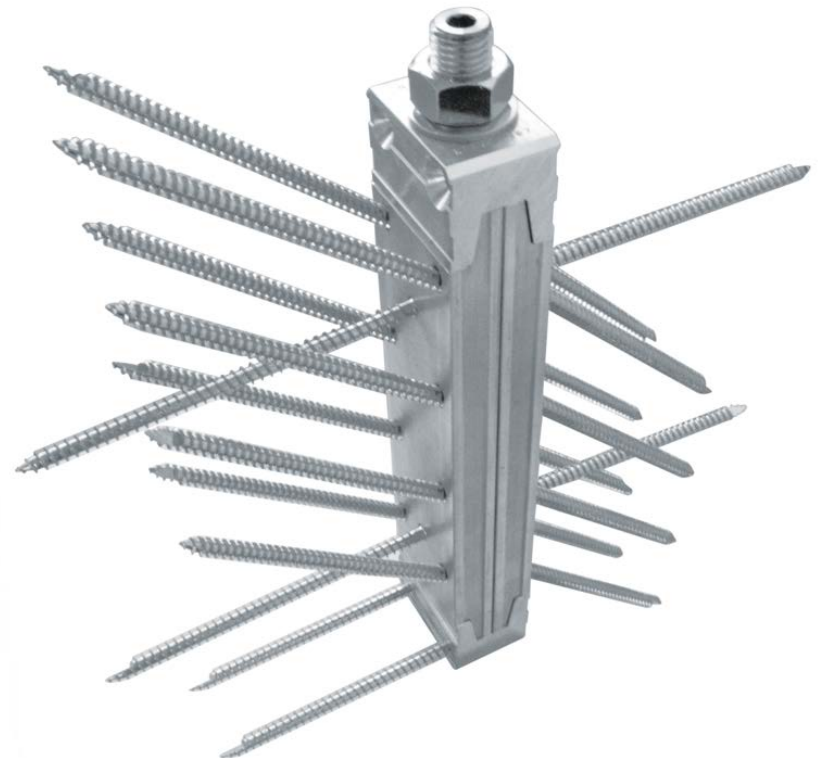
No tilting when mounting!



Threaded rod with washers and hex nuts.

Profiled base plates made of aluminium with fastening holes at 45° and 90°.

Conical clamping aluminium caps for closed joints in the connection area. Additional mc installation and high horizontal



Fasteners – Megant system



MEGANT°
290x60x40



MEGANT°
405x60x40



MEGANT°
520x60x40



MEGANT°
290x100x40



MEGANT°
405x100x40



MEGANT°
520x100x40



MEGANT°
280x150x50

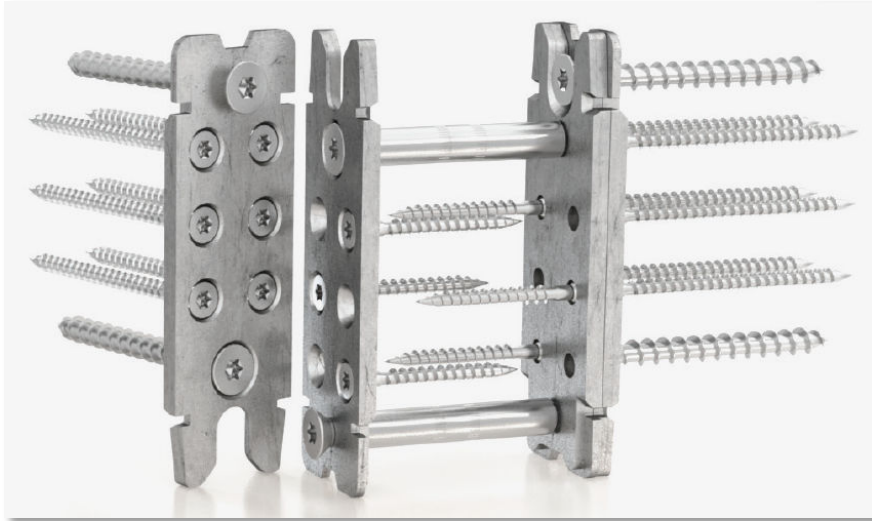


MEGANT°
430x150x50



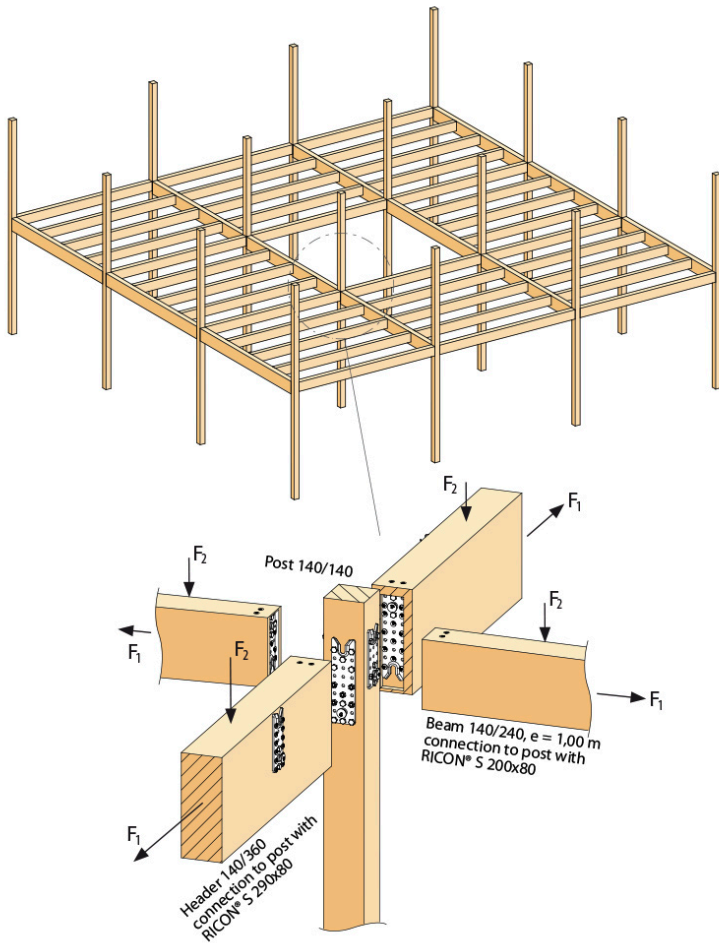
MEGANT°
550x150x50

Fasteners – Ricon system

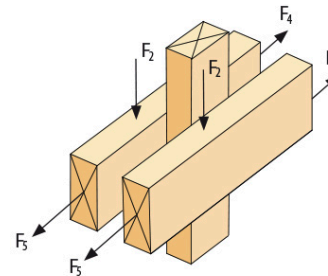
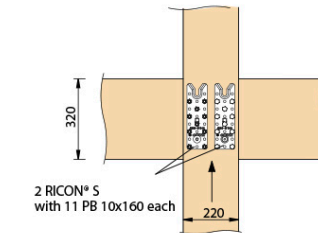
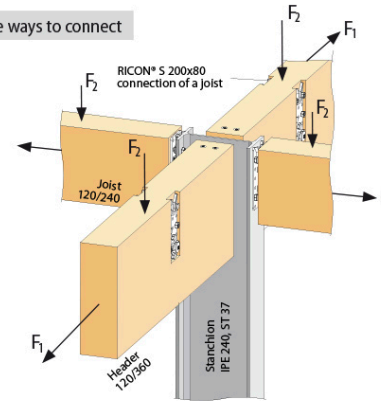


Fasteners – Ricon system

Ceiling of a timber frame construction



Alternative ways to connect



Steel connection



First node for dome

Fasteners – Ricon system



The John W Olver Design Building, UMASS Amherst



Leers Weinzapfel Associates

<https://bct.eco.umass.edu/about-us/the-design-building-at-umass-amherst/>

The John W Olver Design Building, UMASS Amherst

- At its core, the Design Building has a **contemporary, heavy-timber (“mass timber”) wood structure**, consisting of an exposed glulam frame (columns, beams, braces), [cross-laminated timber \(CLT\) and concrete composite floors](#), and CLT shaft walls (for stairs, elevator, and mechanical shafts). It also features a three-story, folded, grand CLT stair in the atrium.
- The **wood-concrete composite floor** system.
- The 70,000 ft³ of **wood** used in the Design Building **grew in just six minutes** (considering all of N. America’s forests). They also **removed (sequestered) 2,000 tons of carbon dioxide (CO₂) from the atmosphere** during growth, which is now permanently stored in the building. This is equivalent to taking 400 cars off the road for one year.

All photos of this building taken by Alex Schreyer.











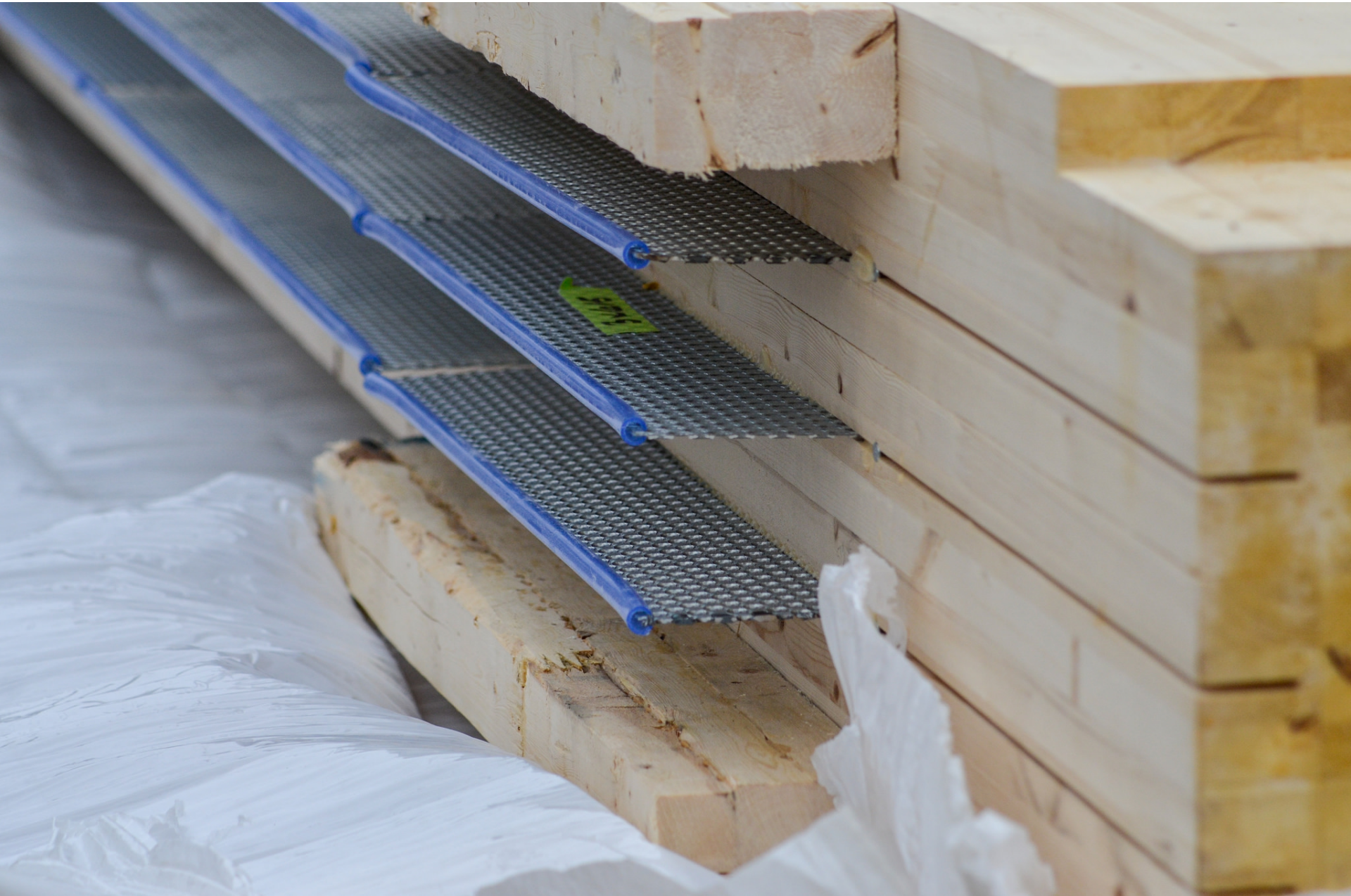






AH 11103 11_109 1138-035
ANCHI-SS 6 7/8 X 94-22 3469LBS

AH 11104 11_111 1138-036
ANCHI-SS 6 7/8 X 94-22 3469LBS
1400X007



























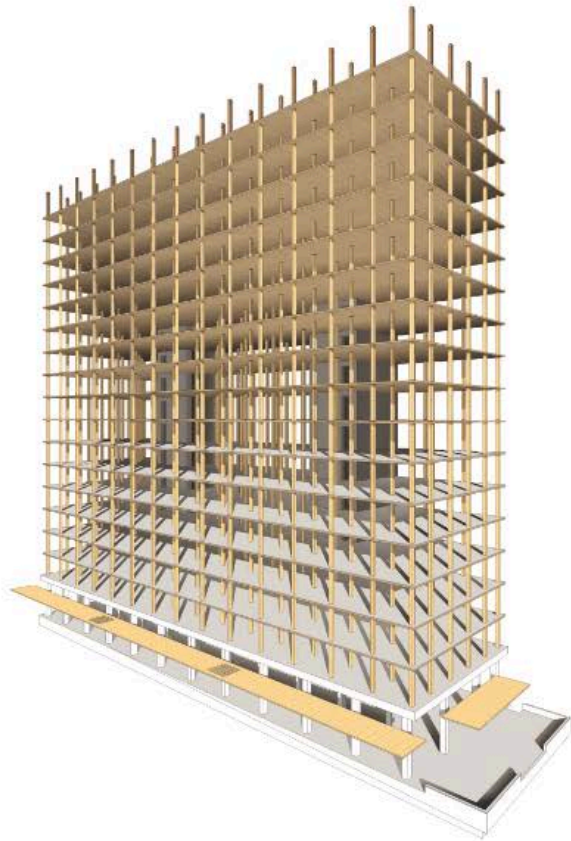
Brock Commons, UBC



Acton Ostry Architects Inc.

Brock Commons

- 18 storeys
- **The mass timber frame was assembled in just over 9 weeks**
- With conventional materials, framing would have taken six to eight months, some three to four times longer. From start to finish, it took about two years to complete the project. In September 2017, over 400 students moved into Brock Commons Tallwood House, located on the campus of the University of British Columbia.
- **It's a hybrid, built of engineered mass timber and concrete**
- Engineered mass timber is made of layers of wood, connected by glue, nails or wooden dowels. It is incredibly strong, stable and rigid while remaining very lightweight. Concrete was used for the main floor and the two stairwells.



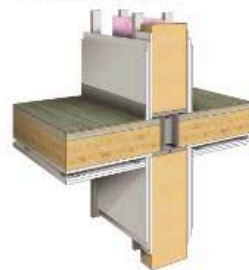
hybrid mass timber and concrete core structure



CLT floor slabs with glulam columns and steel connectors



partial encapsulation during construction

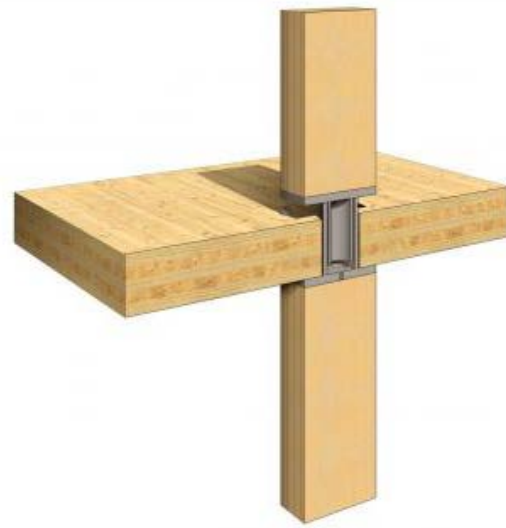


completed construction



northwest view







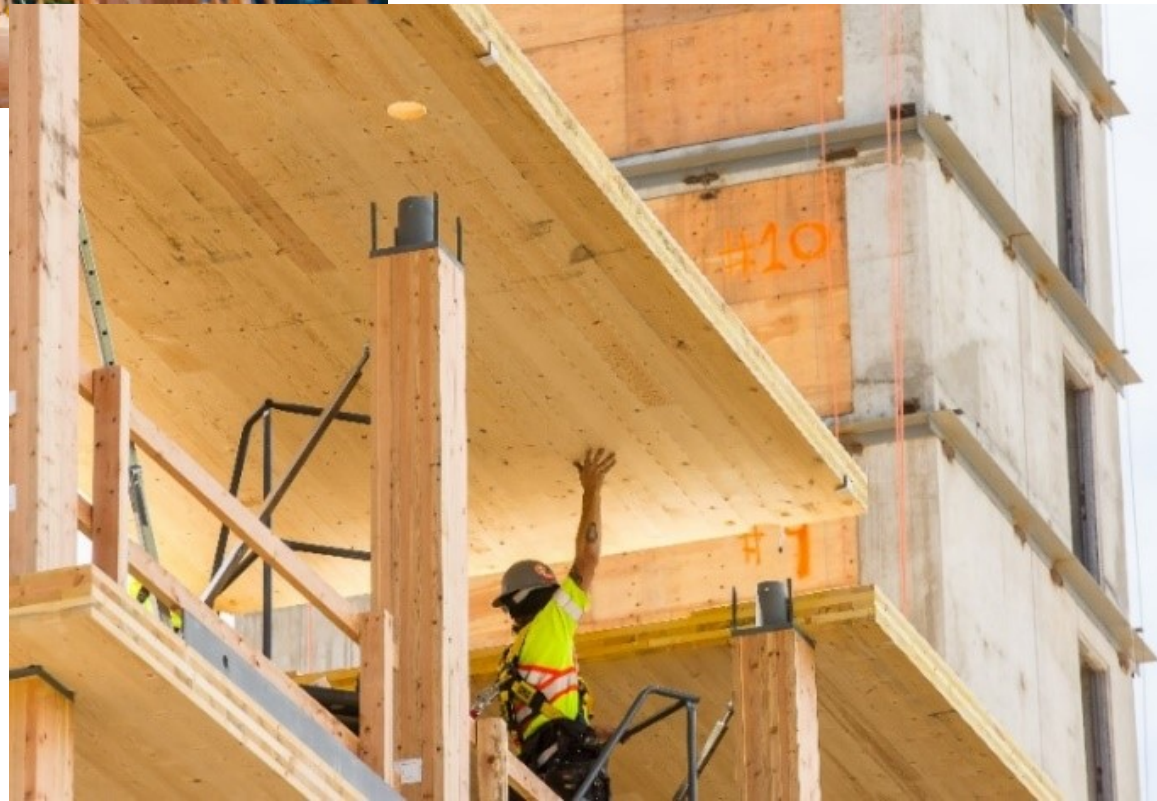






















Because the building is so tall, the wood must all be encapsulated in gypsum board to meet the fire code.

International House, Sydney, Australia




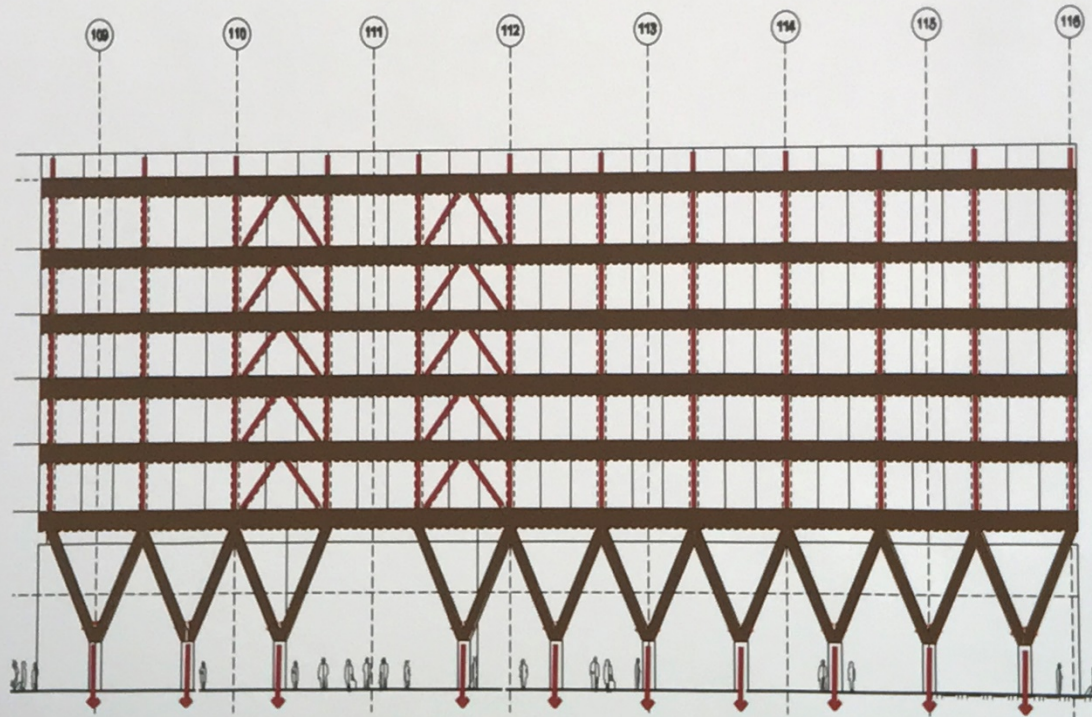
Tzannes Architects

International House, Sydney, Australia

- The office building comprising 7 storeys with approx. 7,910 m² of space will be made from 950 m³ of glued-laminated timber (glulam) and more than 2,000 m³ of Cross Laminated Timber (CLT)
- Ground level constructed from concrete as termites are a big problem in Sydney
- Wood left exposed – building sprinklered

Section view

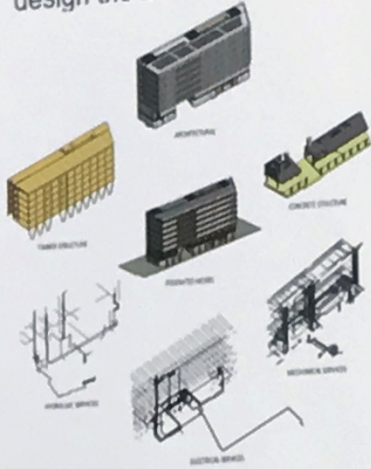
 Pre-fabrication
_ Considerations for Efficient Design: STRUCTURAL GRID



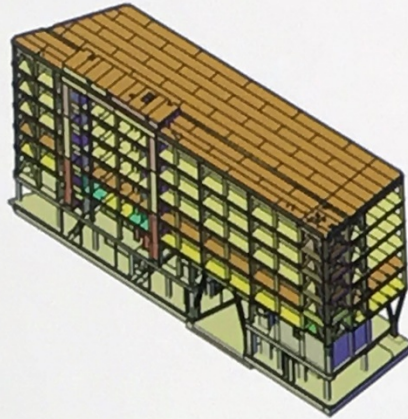
Load Paths

DESIGN PROCESS

DesignMake and Consultants design the Building in 3D



DesignMake produce manufacturing model and shop drawings



Supplier manufacture CLT "blanks" according to schedule.



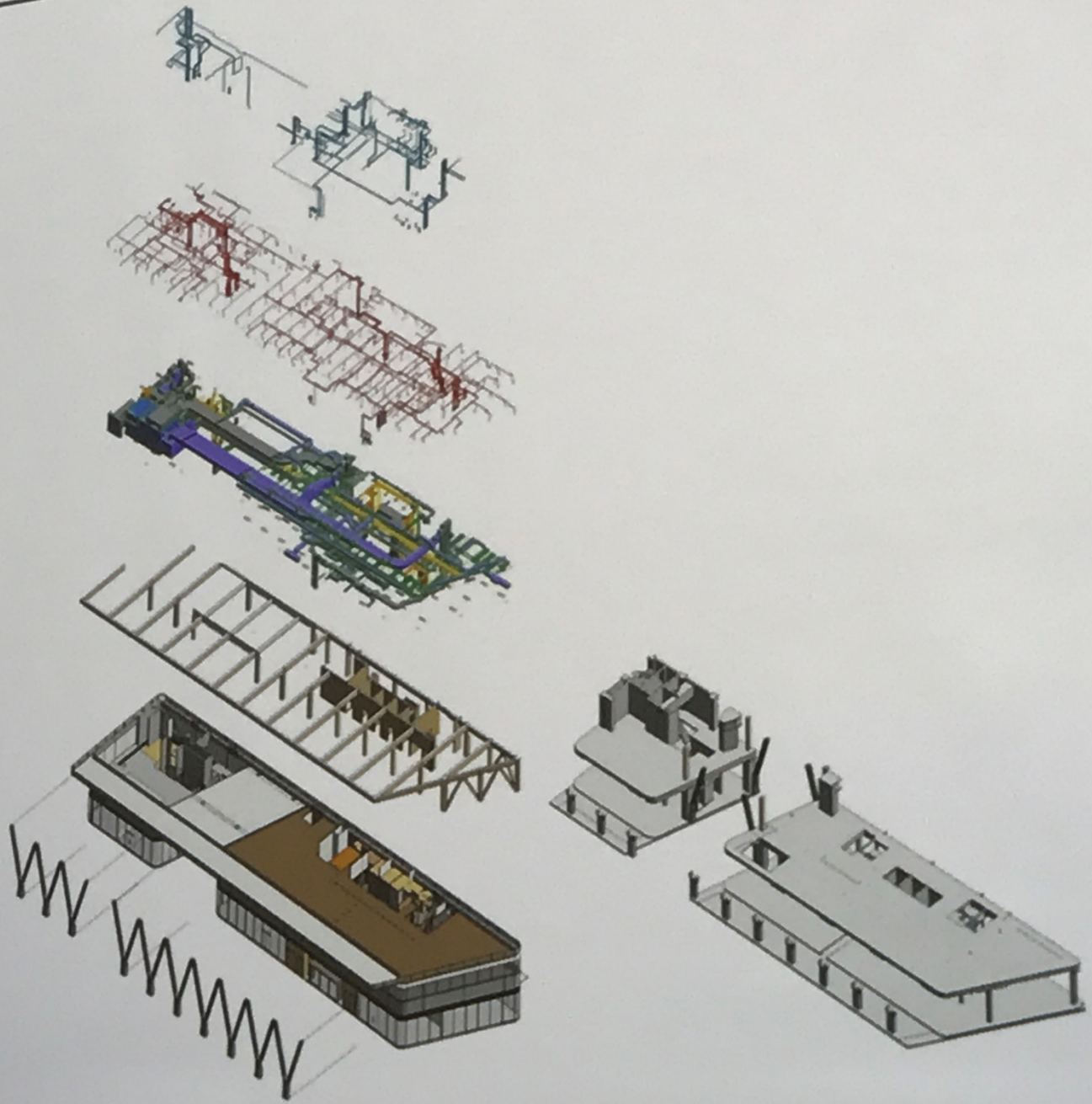
DesignMake process CLT and Supply to site.

Manufacturers ship the timber "blanks" to DesignMake.

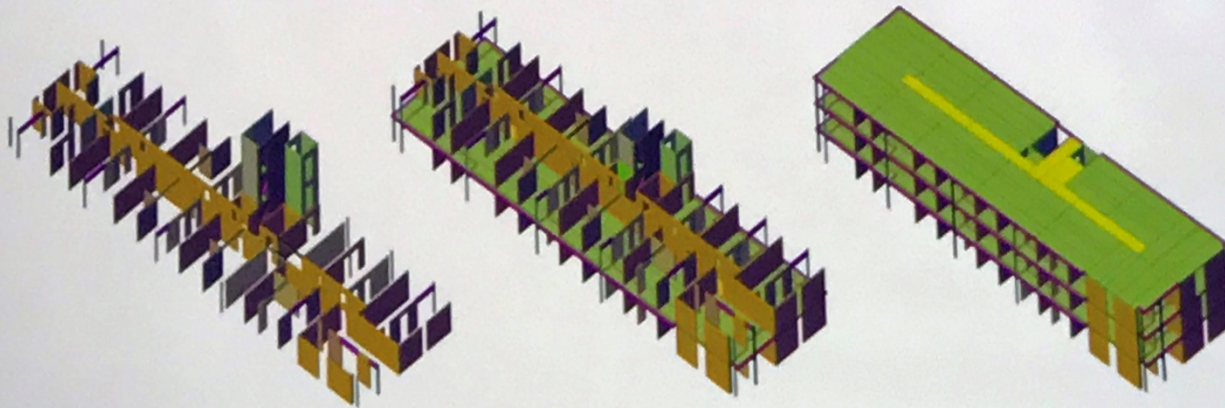
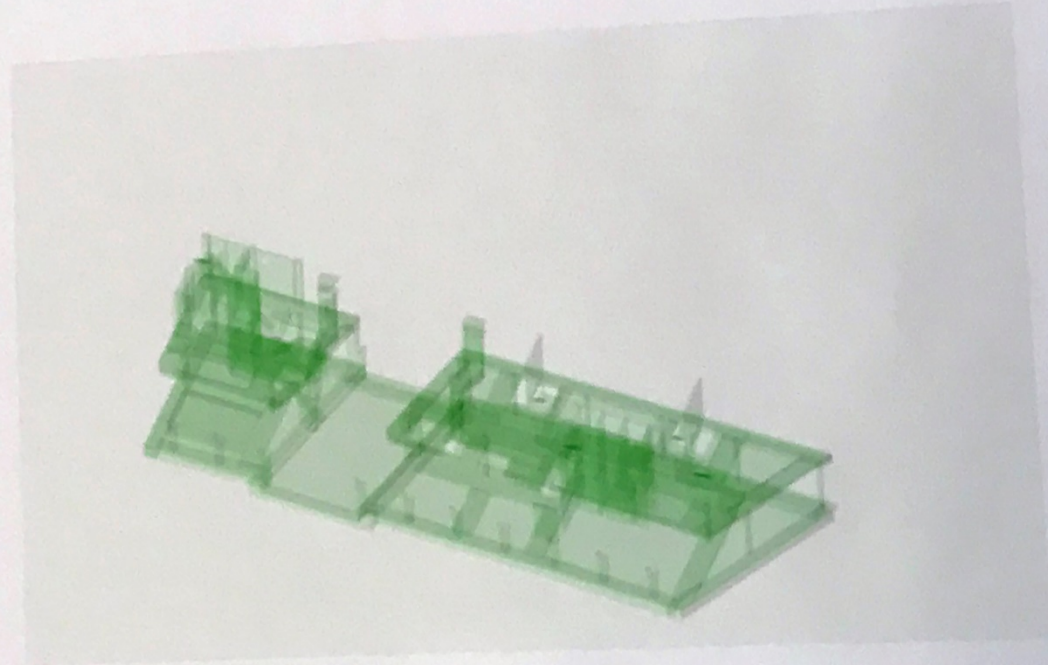
Installers put the building together



INTEGRATED DESIGN MODEL



- Revit based 3d
- What You Design Is What You Get
- CAD to CAM
- Manufacture and CNC processing
- Construction methods incorporated











Megant fastening system used



Factory cut-outs to facilitate mechanical and electrical services installation on site.











EXIT →

SAFETY NOTICES

FIRE EXTINGUISHER
A-B-C
POWDER

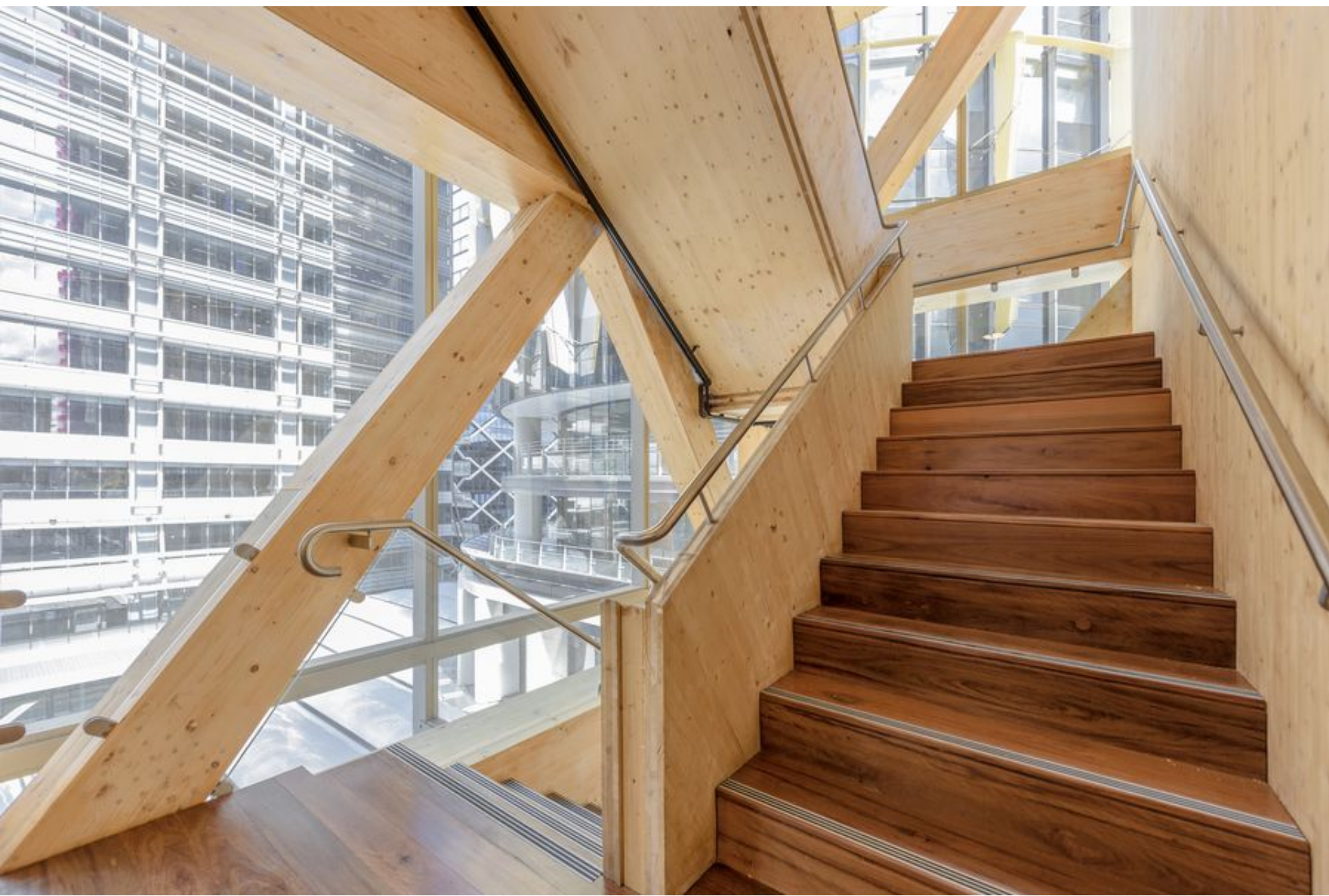


RIGHT















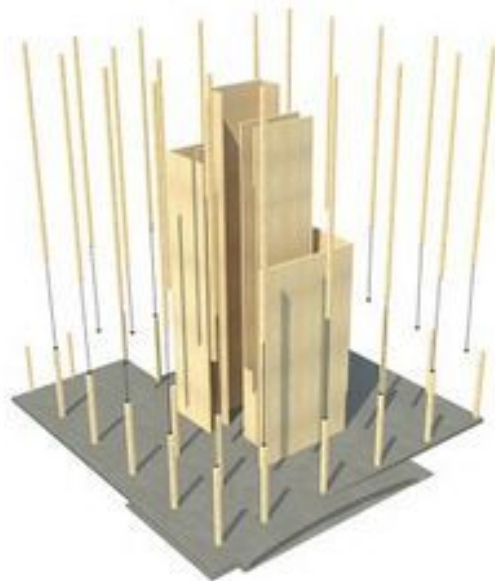
Wood Innovation and Design Centre, Prince George, BC

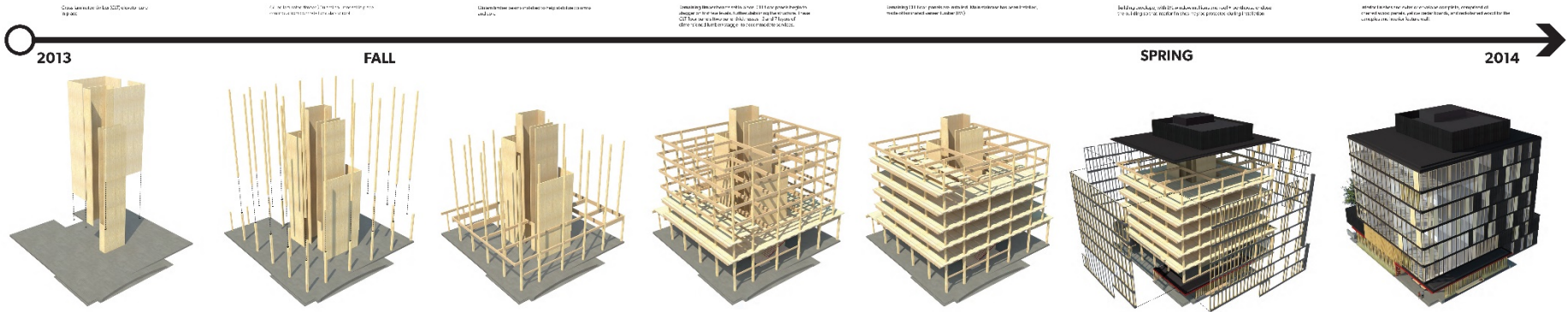


Michael Green Architecture

Project Facts

- Designed by Michael Green Architecture
- The Wood Innovation & Design Centre (WIDC) in downtown Prince George, British Columbia was completed in October 2014. The Centre utilizes a number of wood species and products from across the province such as Douglas-fir, western red cedar, hemlock, pine and spruce. The building incorporates a structural system that includes a variety of locally manufactured solid engineered wood products including cross laminated timber, glue laminated timber and laminated veneer lumber.
- At 97 feet- high (29.5 metres) with six floors and a mechanical penthouse, the WIDC is currently the tallest wood building in Prince George and the tallest contemporary wood building in North America.



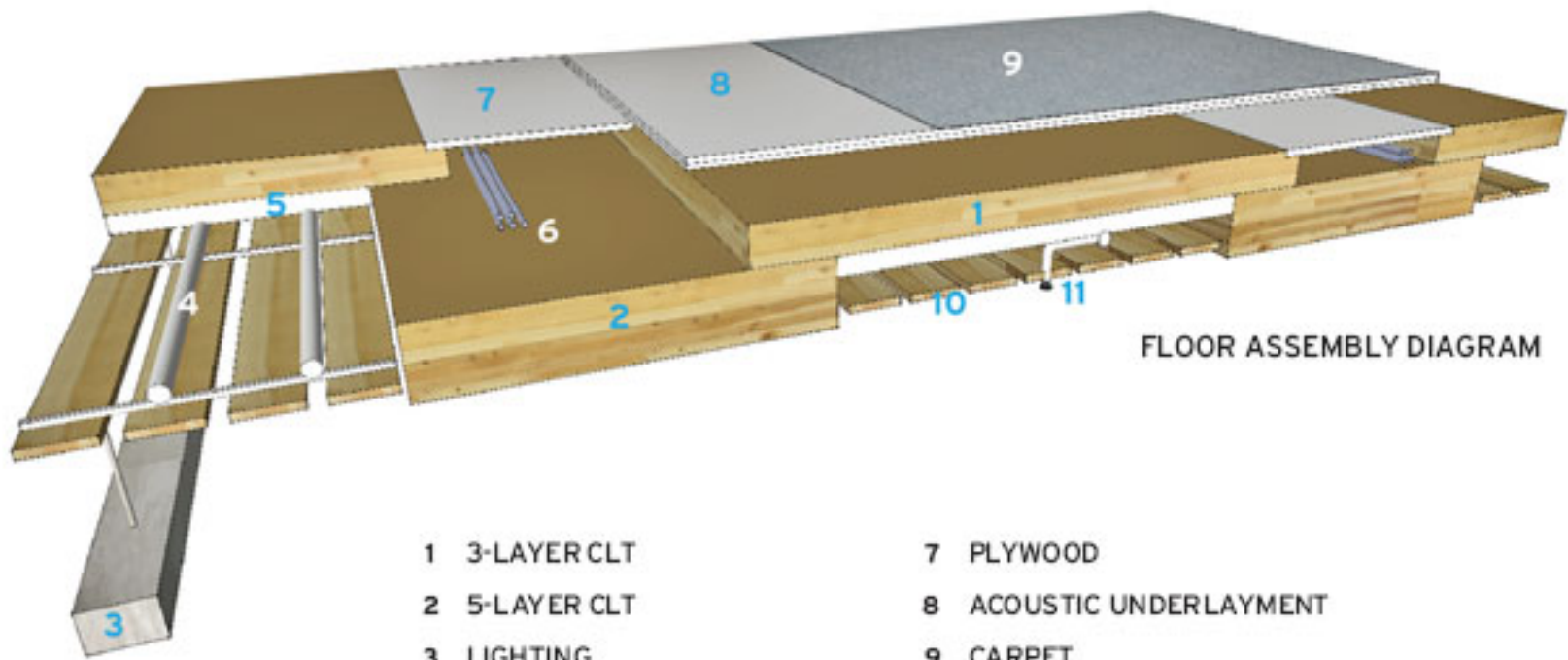


CLT and glulam structures are able to be assembled very quickly!
 Most of the preparation of the elements is done in the factory
 The job site can be very clean as it is largely devoid of wet processes.





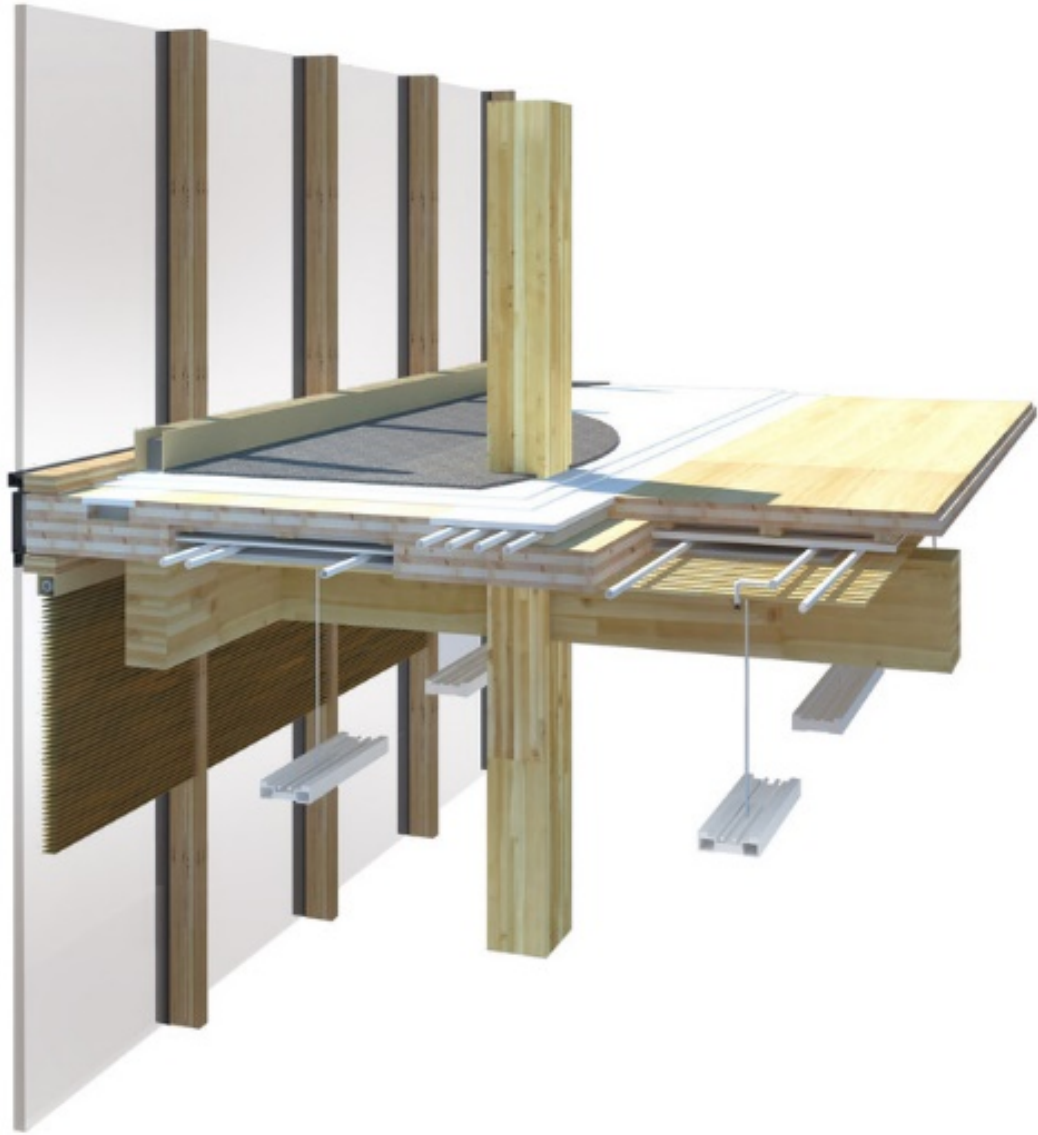




FLOOR ASSEMBLY DIAGRAM

- | | | | |
|---|----------------------------|----|-----------------------|
| 1 | 3-LAYER CLT | 7 | PLYWOOD |
| 2 | 5-LAYER CLT | 8 | ACOUSTIC UNDERLAYMENT |
| 3 | LIGHTING | 9 | CARPET |
| 4 | SERVICES IN CEILING TROUGH | 10 | WOOD SLATS |
| 5 | ACOUSTIC INSULATION | 11 | SPRINKLERS |
| 6 | SERVICES IN FLOOR TROUGH | | |







Kern Center – Hampshire College

<https://sites.hampshire.edu/rwkerncenter/>



**2019 Certified Living for Achieving
the Living Building Challenge |
International Living Future Institute,
Seattle**

Bruner/Cott & Associates, Inc.



R.W. KERN CENTER





















Hitchcock Center – Hampshire College



2019 Certified Living for Achieving
the Living Building Challenge |
International Living Future Institute,
Seattle









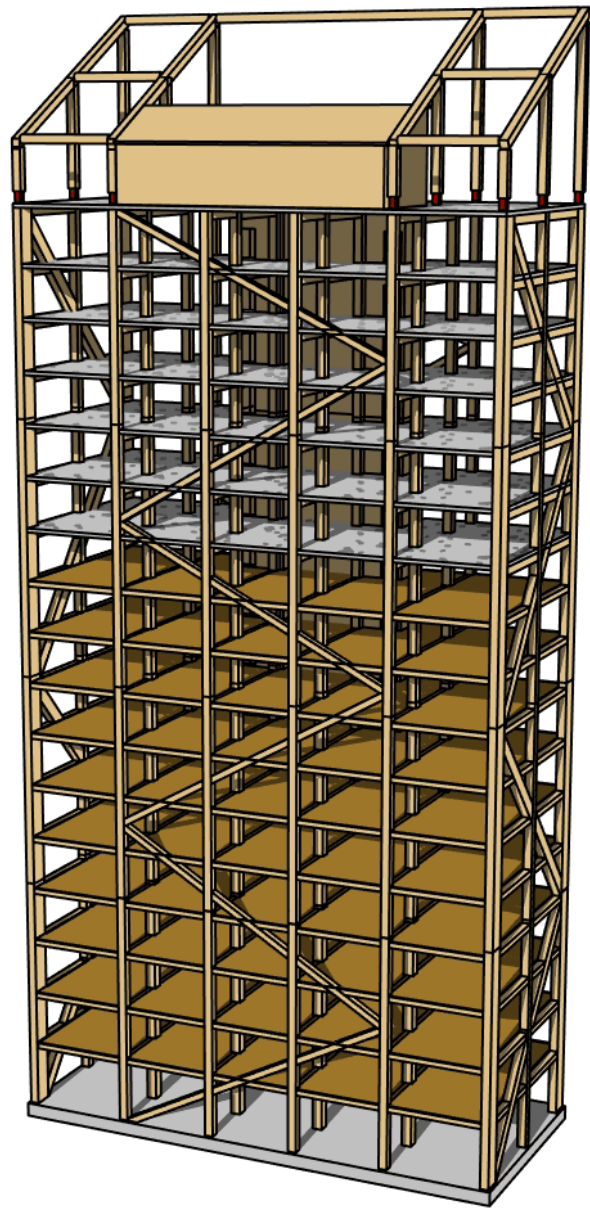
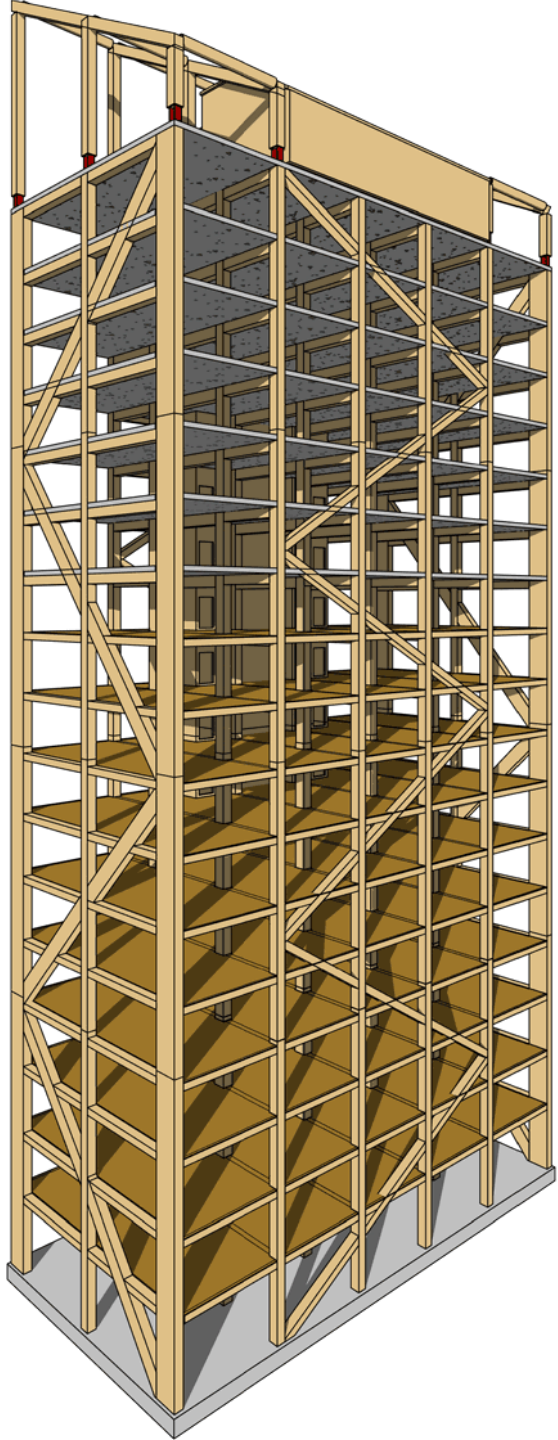


Mjøstårnet, Norway



88.8 m
18 storeys
Tallest exposed
wood structure
in the world
(2019)

Voll Arkitekter, Moelven





















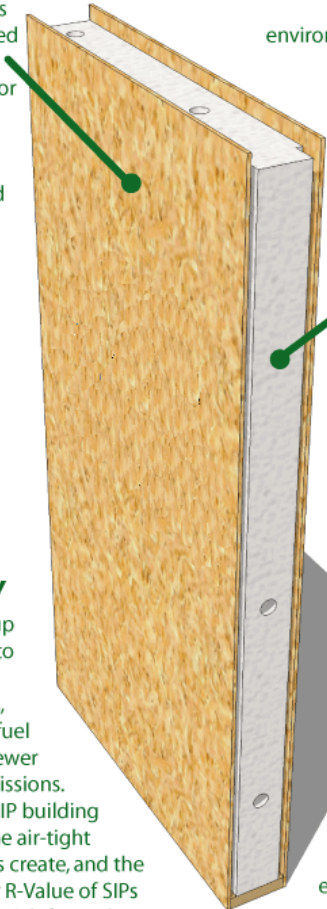
SIPS – Structural Insulated Panels



The entire building can be made from a type of sandwich panel that is insulated.

SIPS – Structural Insulated Panels

OSB is made from fast-growing, small-diameter trees that can be harvested from plantations, avoiding the need for cutting old-growth trees. Even the smallest scraps of wood can be turned into OSB, virtually eliminating waste.



EPS FOAM is a recyclable material that is completely inert in the environment, and is in fact often used as a soil additive. Producing EPS foam insulation requires less energy than producing fiberglass insulation, and no CFCs are used in the process.

ENERGY EFFICIENCY

SIP homes require up to 50% less energy to heat and cool than stick-framed homes, meaning less fossil fuel consumption and fewer greenhouse gas emissions. The efficiency of a SIP building is a result of both the air-tight envelope the panels create, and the substantially higher R-Value of SIPs when compared to stick-framed walls.

AIR QUALITY

SIP panels release no volatile organic compounds (VOCs). Furthermore, because SIP-built structures are so air-tight, indoor air quality can be closely controlled, a huge advantage for those with environmental or chemical allergies.

A method of building walls WITHOUT studs
 Can use EPS (more sustainable) or XPS foam as insulation
 Panel thickness varies from 140mm to close to 300mm.

SIPs insulation-value (R-value)

SIP Panel Thickness	10 cm	15 cm	21 cm	26 cm	31 cm
	4 1/2"	6 1/2"	8 1/4"	10 1/4"	12 1/4"
XPS	20	30	38	48	58
EPS	14	21	28	35	42

SIP thicknesses

SIP R-Values (Calculated R-Values)

SIP Panel Thickness

	4 1/2"	6 1/2"	8 1/4"	10 1/4"	12 1/4"
EPS	14	21	28	35	42
XPS	20	30	38	48	58
Polyurethane	*	*	*	N/A	N/A

*R-values vary between SIP manufacturers slightly

If a higher R value is needed, the insulation should generally be placed on the interior to prevent the OSB on the exterior from getting moisture trapped next to it which could cause rot.

Better idea to just specify a thicker panel.





OUTSIDE
OUT
2R33

2005

30

31

32

33

34

35

36

OUTSIDE

37

38

39

40

41

42

43

44

45

46

47

48

49

50

51

52

53

54

55

56

57

58

59

60

61

62

63

64

65

66

67

68

69

70

71

72

73

74

75

76

77

78

79

80







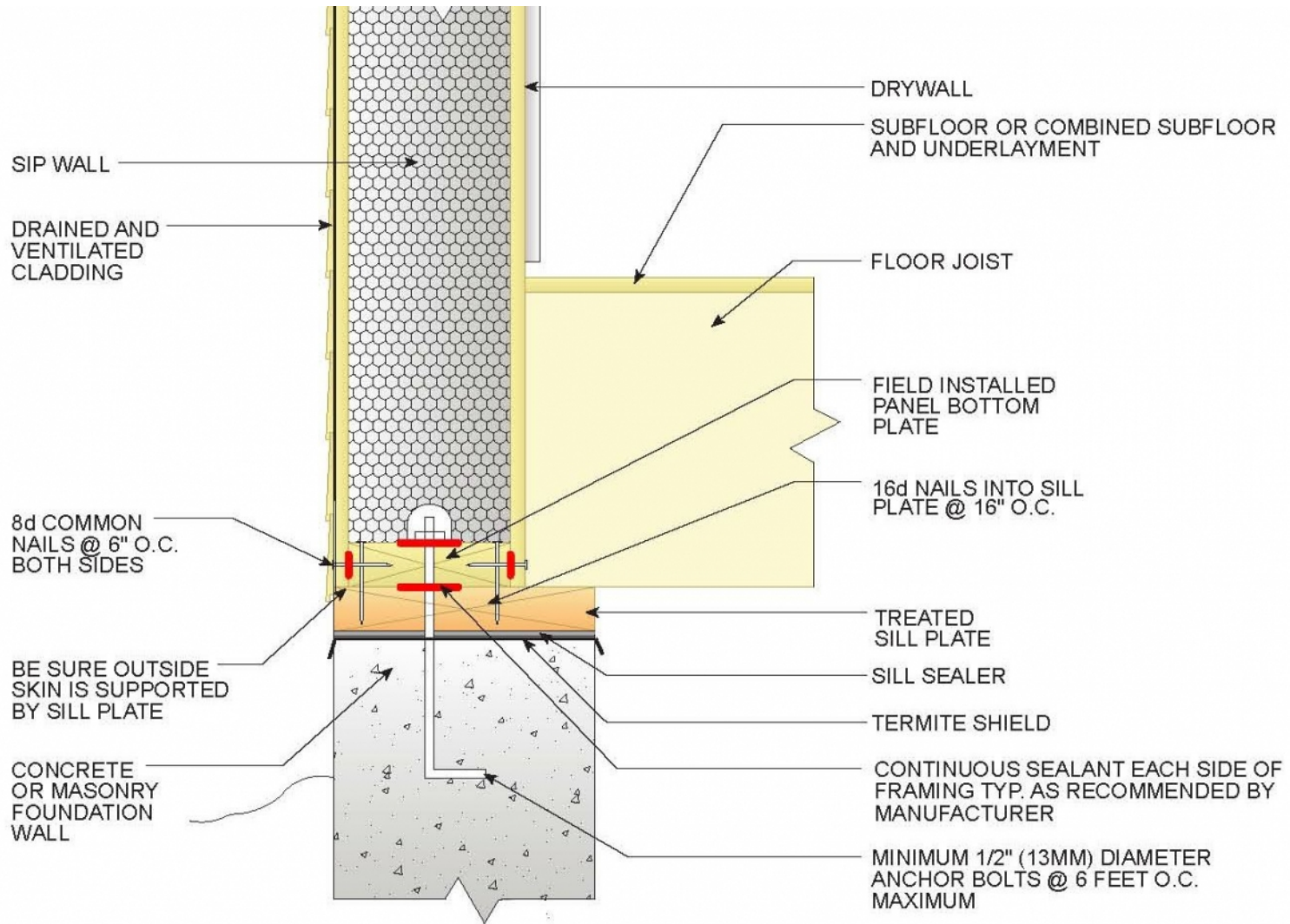
- A 38 x 140 (or whatever size matches the width of the SIP) is nailed to form the base plate.
- The SIP is lowered over





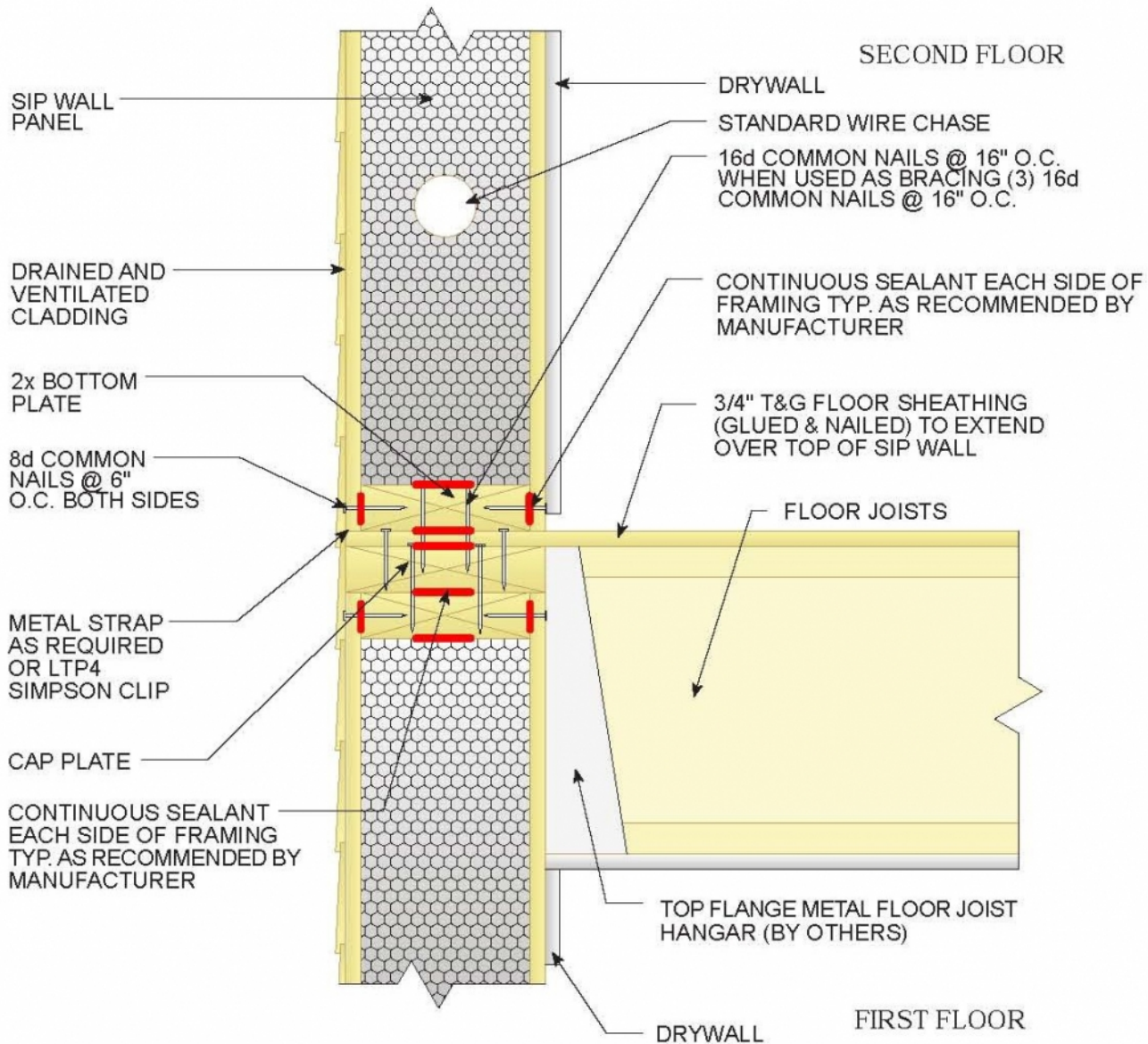


Wood stud inserted at the end of the panel as it turns the corner to facilitate adding the next panel and cladding.



FOUNDATION CONNECTIONS

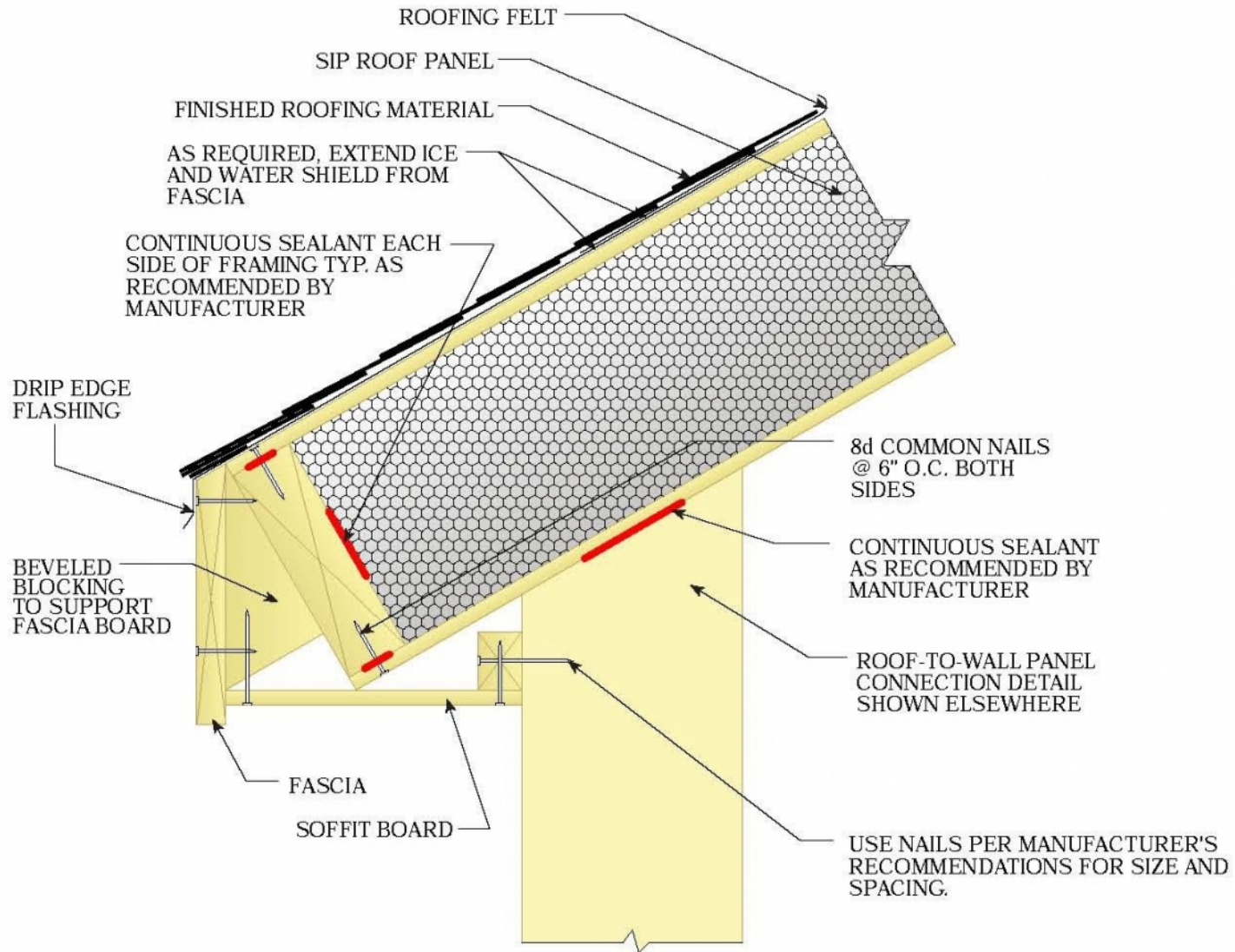
FOUNDATION CONNECTION DETAIL A



2ND FLOOR CONNECTION DETAILS

<http://www.sips.org/technical-information/sips-construction-details>

HANGING FLOOR



EAVES DETAILING

<http://www.sips.org/technical-information/sips-construction-details>

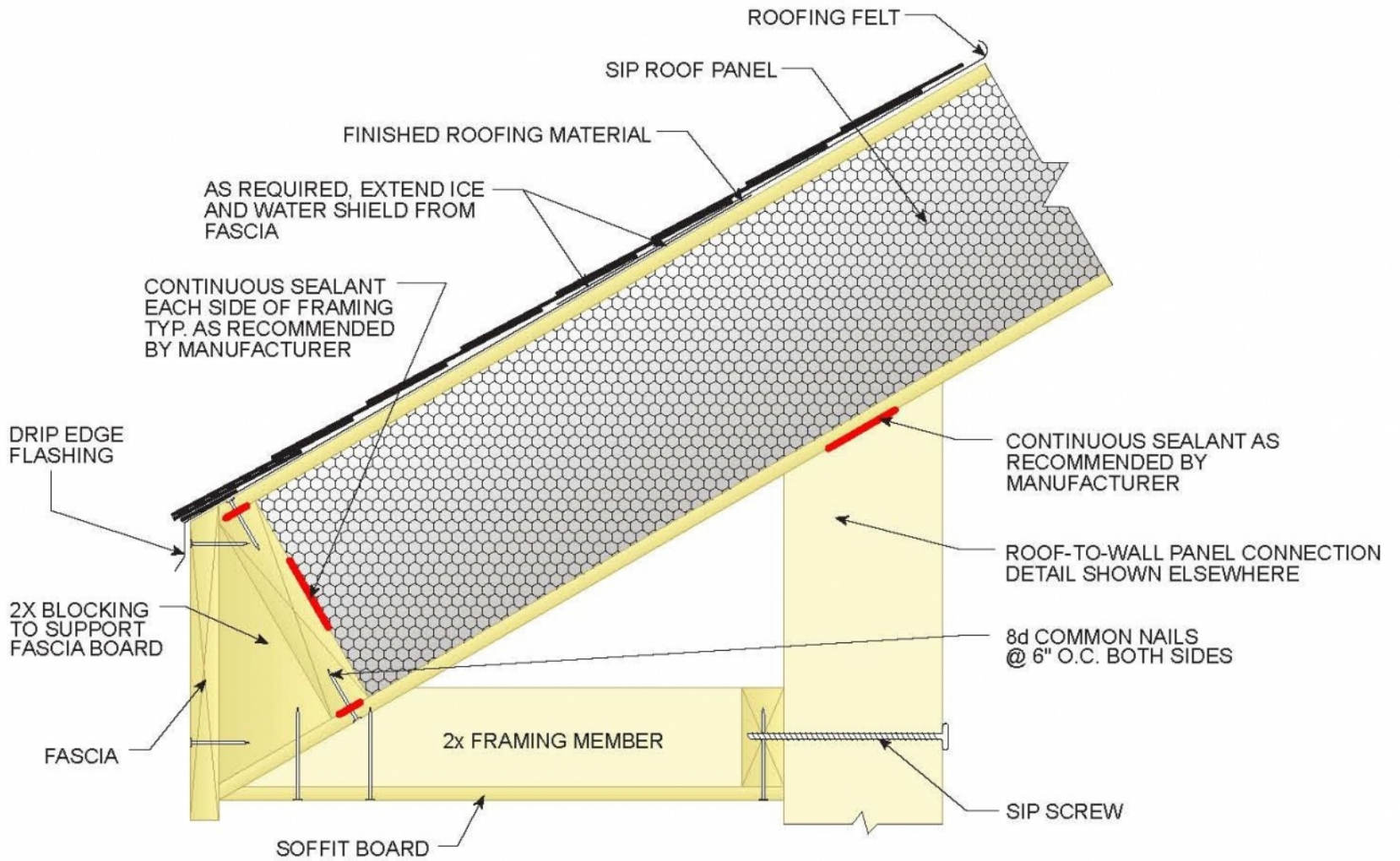
EAVES DETAIL D



EAVES DETAILING

EAVES DETAIL C

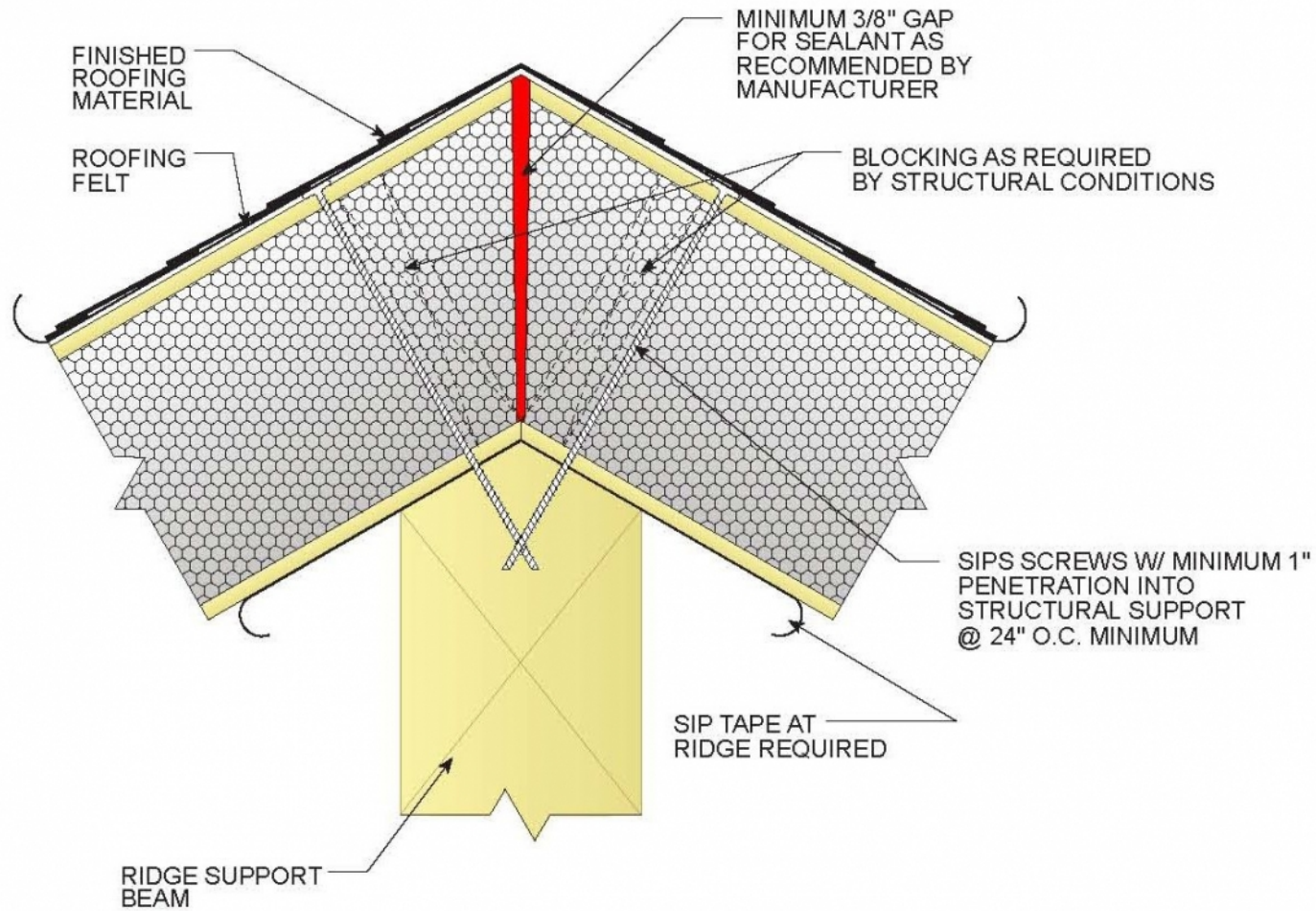
<http://www.sips.org/technical-information/sips-construction-details>



EAVES DETAILING

EAVES DETAIL B

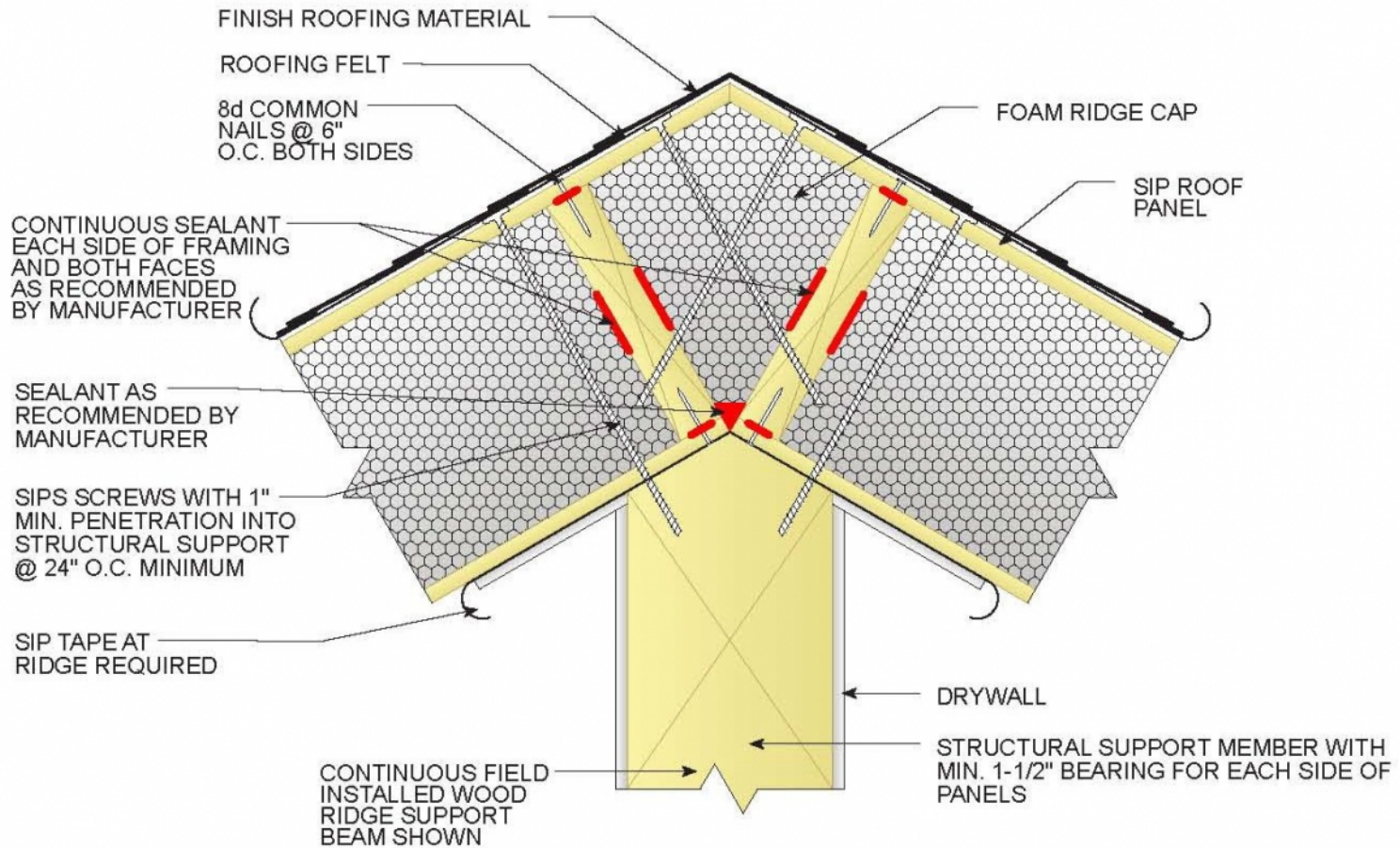
<http://www.sips.org/technical-information/sips-construction-details>



ROOF-TO-ROOF PANEL CONNECTIONS

BEVELED SIP RIDGE DETAIL

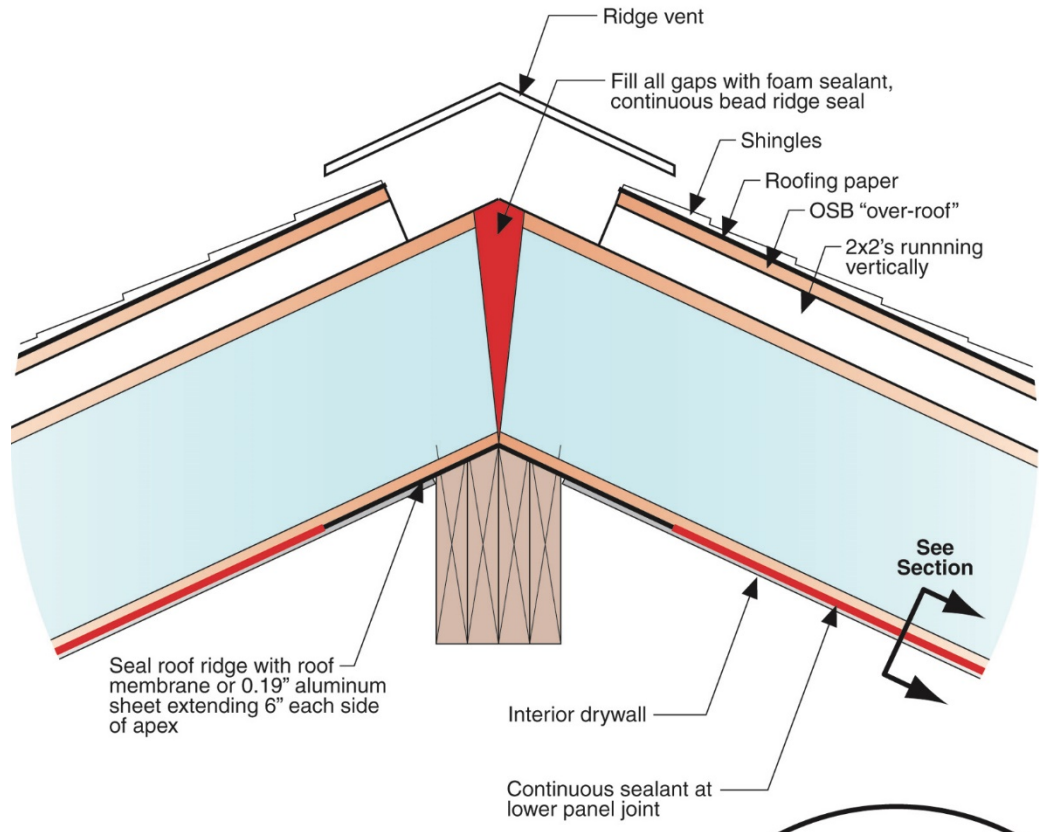
<http://www.sips.org/technical-information/sips-construction-details>



ROOF-TO-ROOF PANEL CONNECTIONS

FOAM RIDGE CAP DETAIL

<http://www.sips.org/technical-information/sips-construction-details>



© buildingscience.com. Reprinted with permission.

