

Steel and Timber Systems



Gene H. Kruger Pavilion
Laval University
Quebec City, Quebec
Paul Gauthier + Gallienne Moisan Architects
2005









































Serpentine Pavilion
London, England
Frank O. Gehry Architects
2008

























Jackson-Triggs Niagara Estate Winery
Niagara-on-the-Lake, Ontario
KPMB Architects
2001























Richmond Speed Skating Oval
Richmond, BC
Cannon Design
George Third and Son Steel Fabricators
2010





















T2
June 25/01

T3

46303









































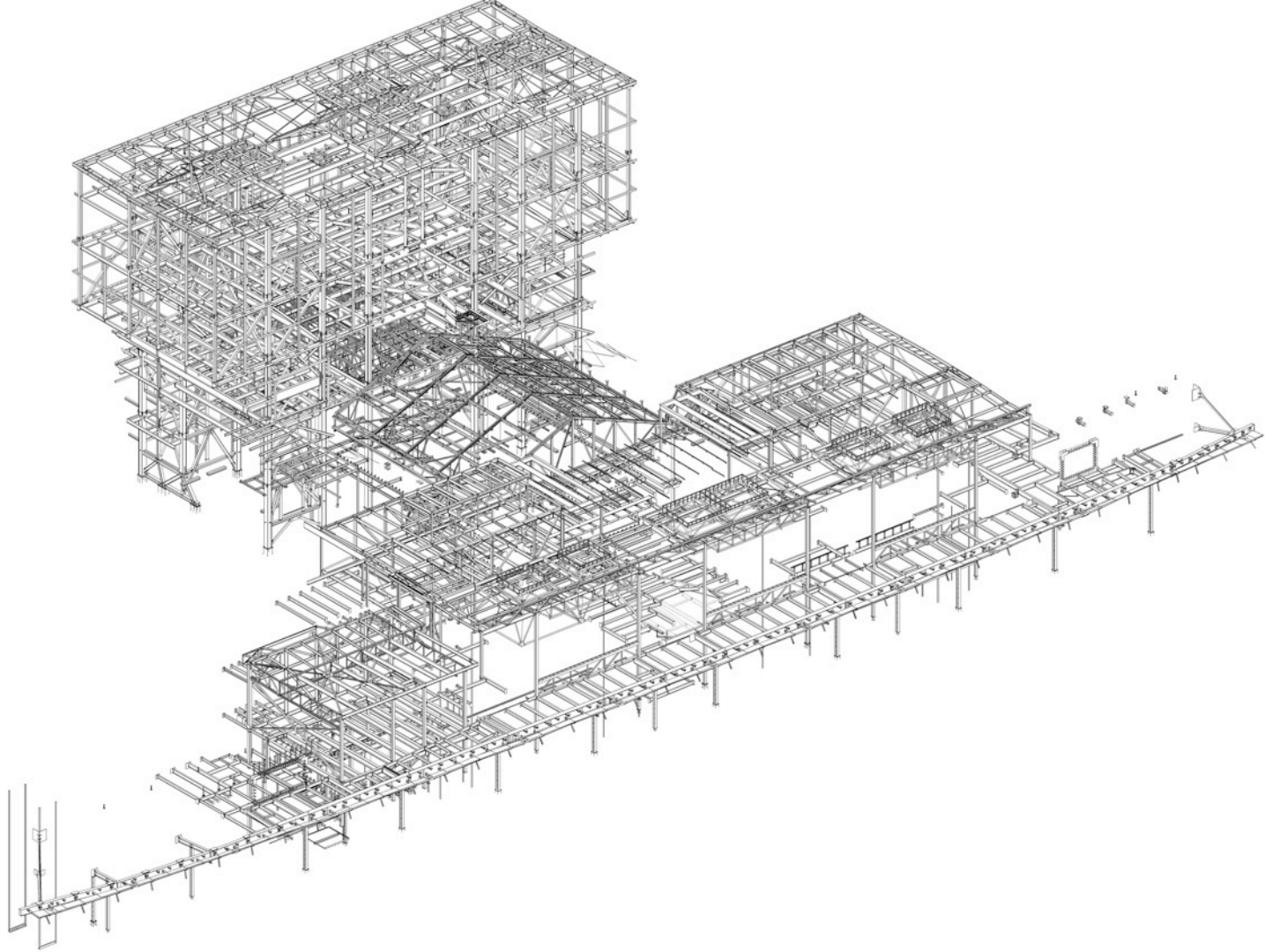








*Addition to the Art Gallery of Ontario
Toronto, Ontario
Frank O. Gehry Architect
2008*





























STAY OFF
THIS STRUCTURE
POWER OFF

GATE #7

GIVING SPACE
CONTEMPORARY ART IN UNEXPECTED PLACES
Experience our ever-evolving collection of progressive, historic, and cultural art.

IN YOUR FACE
CONTEMPORARY ART IN UNEXPECTED PLACES
Experience our ever-evolving collection of progressive, historic, and cultural art.











Dundas St W

Beverley St

THIS LANE ENDS

EllisDon
www.ellisdon.com

EllisDon
www.ellisdon.com

Art Gallery

OPENING

DANGER

DANGER



















Beverley St

DANGER
NO THROUGH ACCESS
PLEASE STAY AWAY FROM
EDGE OF ROADWAY AT ALL TIMES.
PROPERTY DAMAGE
IS NOT WALKER ALLOWED TO

NO THROUGH ACCESS
PLEASE STAY AWAY FROM
EDGE OF ROADWAY AT ALL TIMES.
PROPERTY DAMAGE
IS NOT WALKER ALLOWED TO







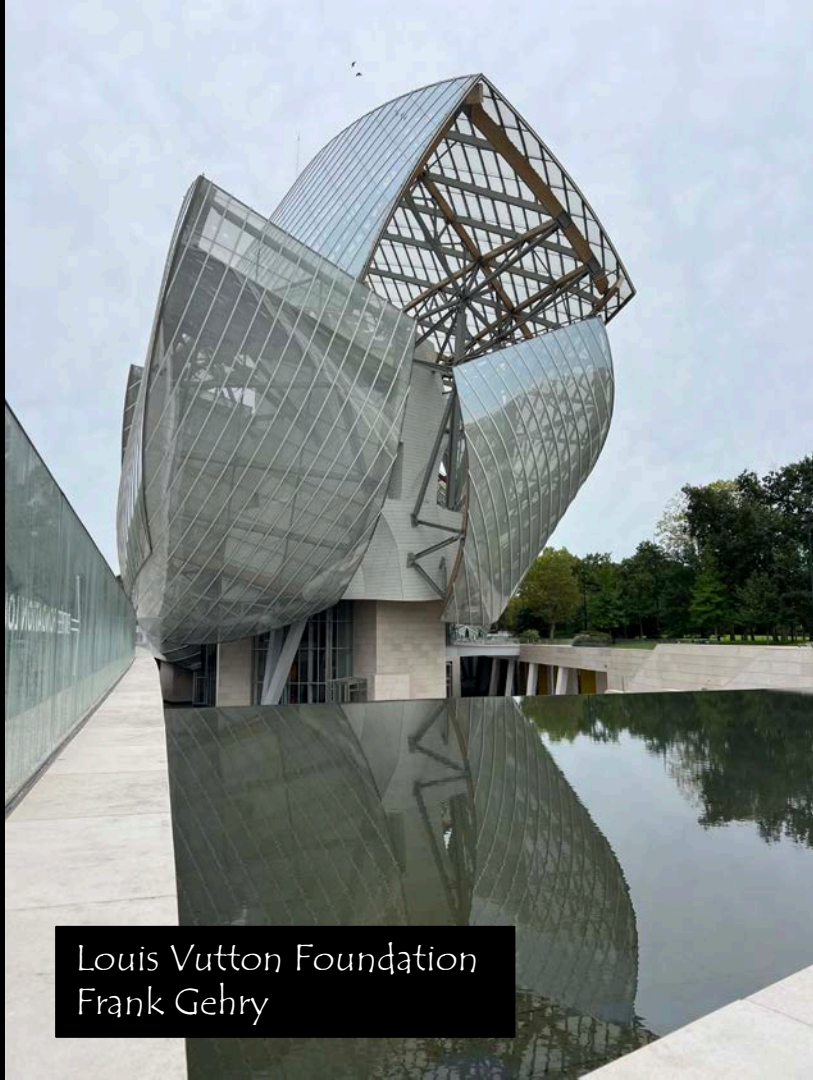




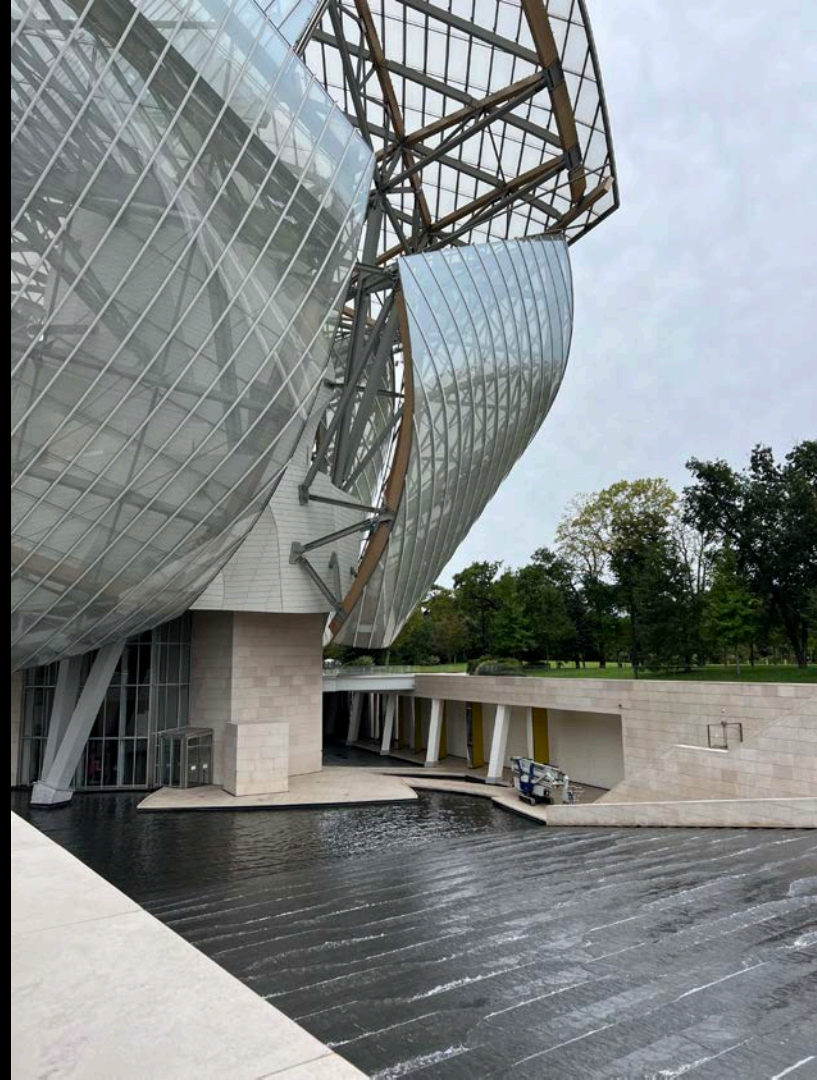




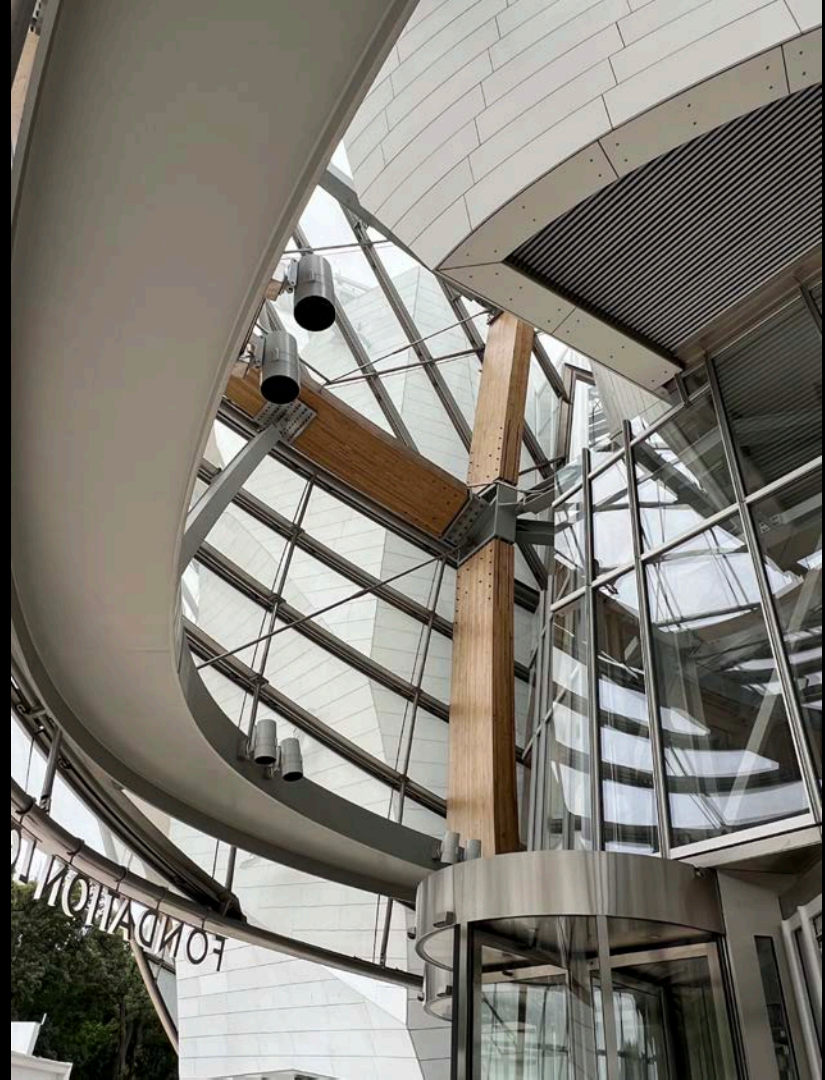
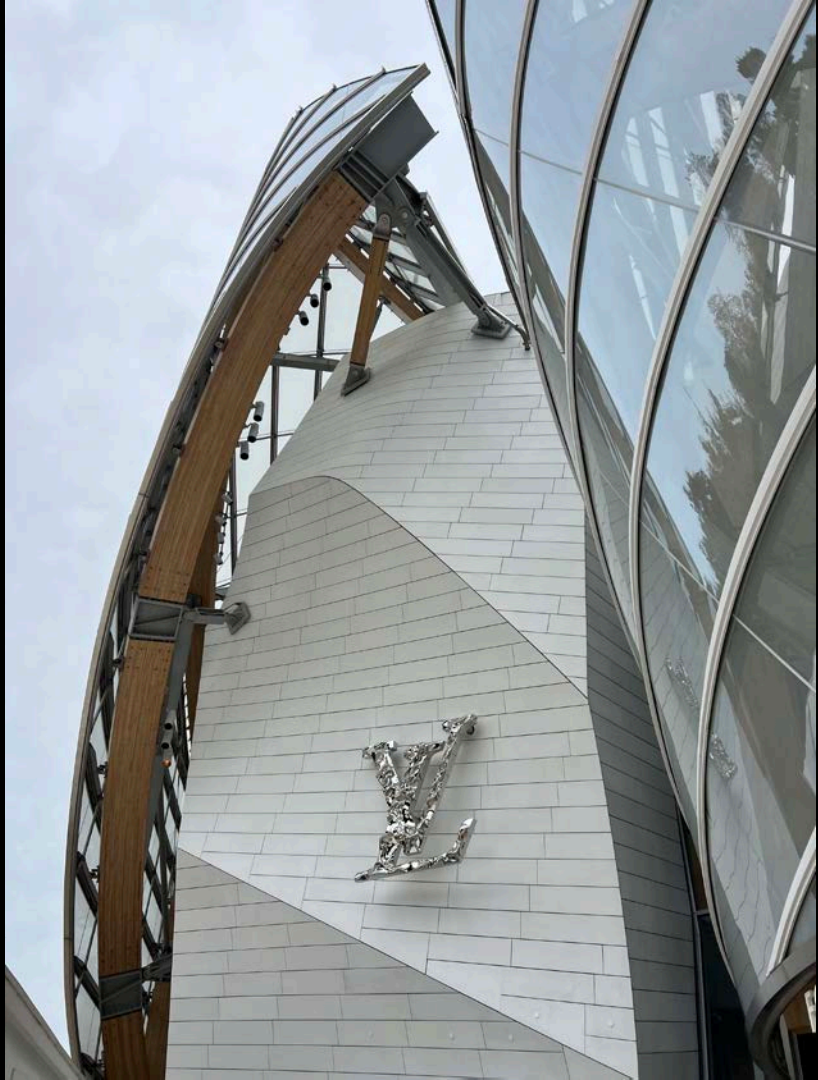


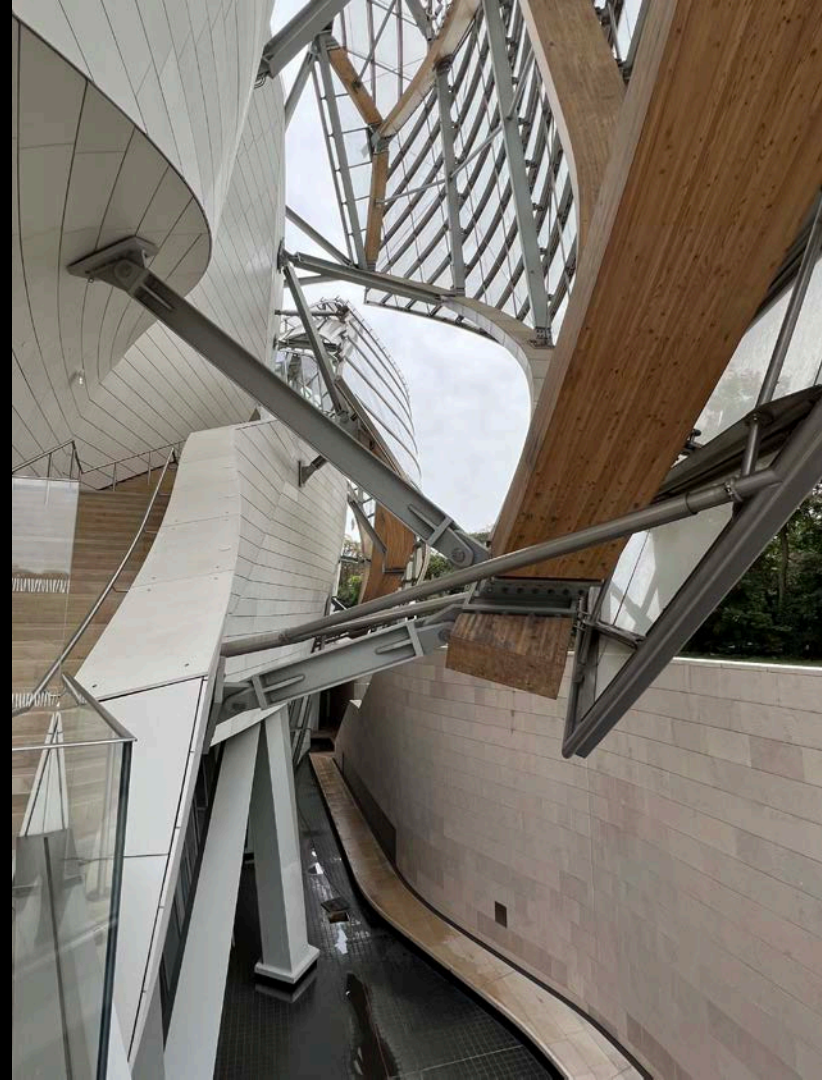
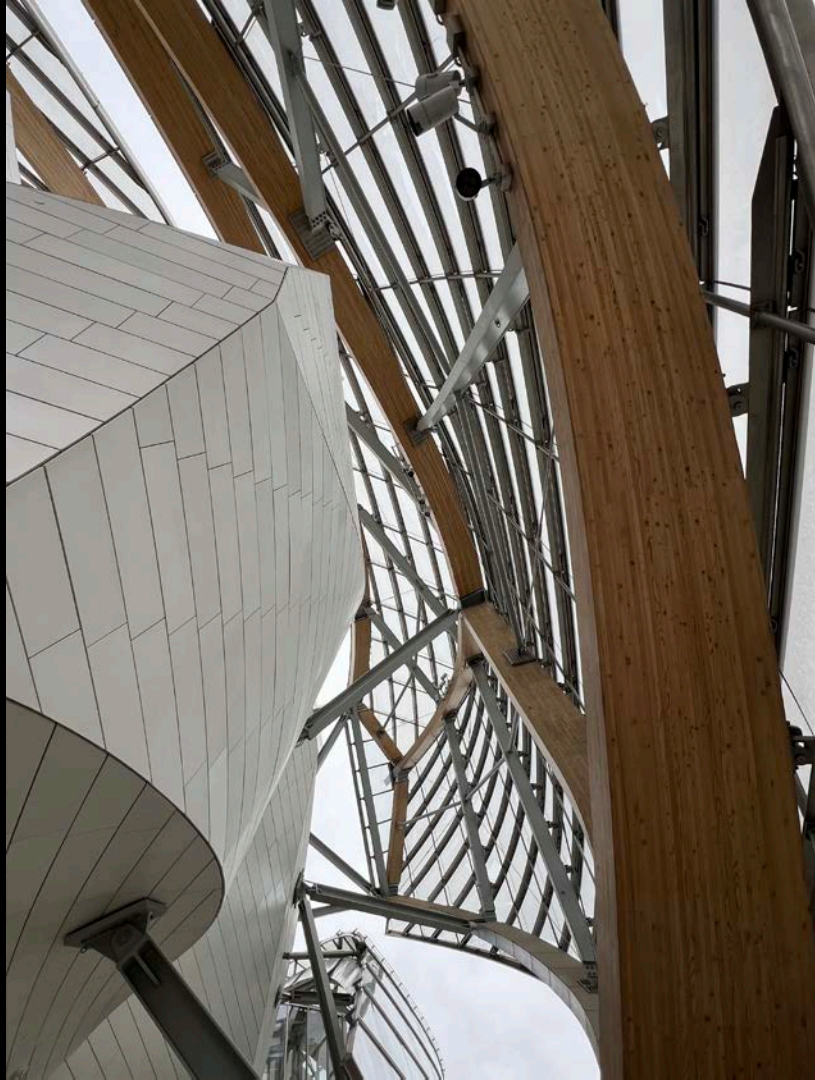


Louis Vutton Foundation
Frank Gehry















Brentwood Skytrain Station
Vancouver, BC
Peter Busby
2002















SITE SAFETY RULES

1. All workers are to report to the Site Office before entering the Building Site.
2. Hard hats, Safety Harness and Personal Protective Equipment as required are to be worn at all times.
3. All Employees are to receive a Site Safety Orientation prior to starting work on this Project.
4. Workers are to report any medical conditions to the Site that obstruct safe working work.
5. Workers are to report any medical conditions to the Site that obstruct safe working work.
6. Workers are to report any medical conditions to the Site that obstruct safe working work.
7. All Sub-Contractors are to provide Safety Data Sheets for all materials to be used on site.
8. All Sub-Contractors are to provide Safety Data Sheets for all materials to be used on site.
9. No alcohol or drug use will be tolerated on site.
10. Any unsafe acts or hazardous conditions are to be reported immediately to any supervisor from the project and will be investigated on site.
11. Any unsafe acts or hazardous conditions are to be reported immediately to any supervisor from the project and will be investigated on site.
12. All accidents, injuries, or near-misses are to be reported to the Site Superintendent or Construction Company Construction Company Inc.
13. All accidents, injuries, or near-misses are to be reported to the Site Superintendent or Construction Company Construction Company Inc.
14. All accidents, injuries, or near-misses are to be reported to the Site Superintendent or Construction Company Construction Company Inc.
15. All Sub-Contractors are required to have a Safety Program and shall appoint representatives to attend Site Safety Meetings.

24 Hour Emergency Telephone Number (504) 661-2915



Dominion Construction







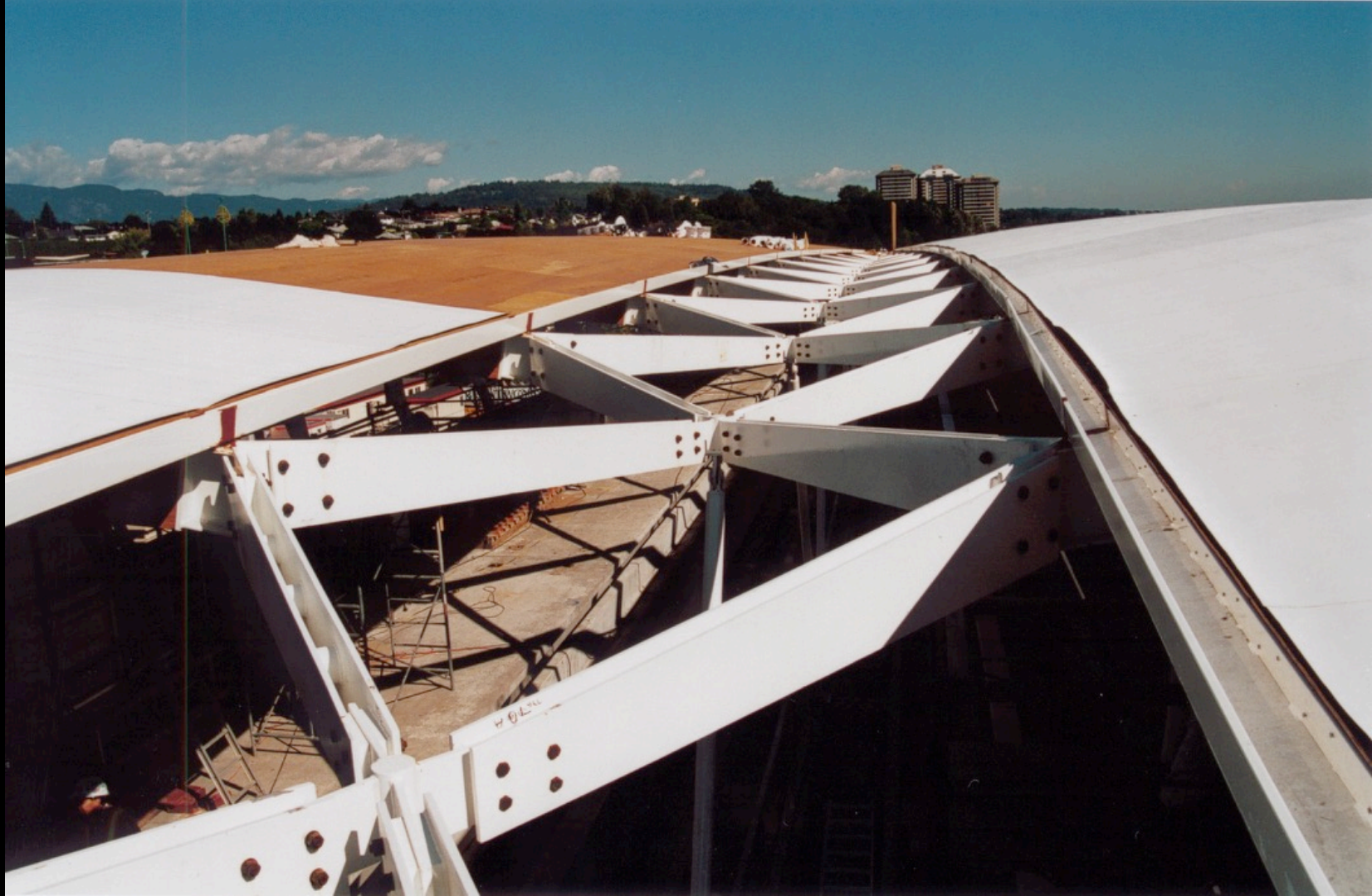
SITE SAFETY RULES

- 1. All activities are to report to the Site Office before entering the Building Site.
- 2. All workers, Safety Personnel and Non-Safety Personnel are required to be signed in at all times.
- 3. Employees are to receive a Site Safety Orientation prior to starting work on this project.
- 4. All workers are to wear appropriate safety gear at all times.
- 5. Workers are to observe any regulatory health and safety requirements for the building site.
- 6. All workers are to wear appropriate safety gear at all times.
- 7. All workers are to wear appropriate safety gear at all times.
- 8. All workers are to wear appropriate safety gear at all times.
- 9. All workers are to wear appropriate safety gear at all times.
- 10. All workers are to wear appropriate safety gear at all times.

678-11
10-01-01















A photograph of the Renfrew Skytrain Station in Vancouver, BC. The station is a long, elevated structure with a curved roof supported by a series of white, Y-shaped concrete pillars. The roof has a corrugated metal finish. The station platform is visible, with glass railings and a set of stairs leading up to it. In the foreground, there is a fenced-off construction area with a white pickup truck parked nearby. The sky is clear and blue.

Renfrew Skytrain Station
Vancouver, BC
VIA Architecture
2002









Rupert Skytrain Station
Vancouver, BC
VIA Architecture
2002



Terex
776-8688



























Gilmore Skytrain Station
Vancouver, BC
Peter Busby Architects
2002

















Commercial Skytrain Station
Vancouver, BC
VIA Architecture
2002





































The Core, Eden Project
St. Austell, England
Nicholas Grimshaw

















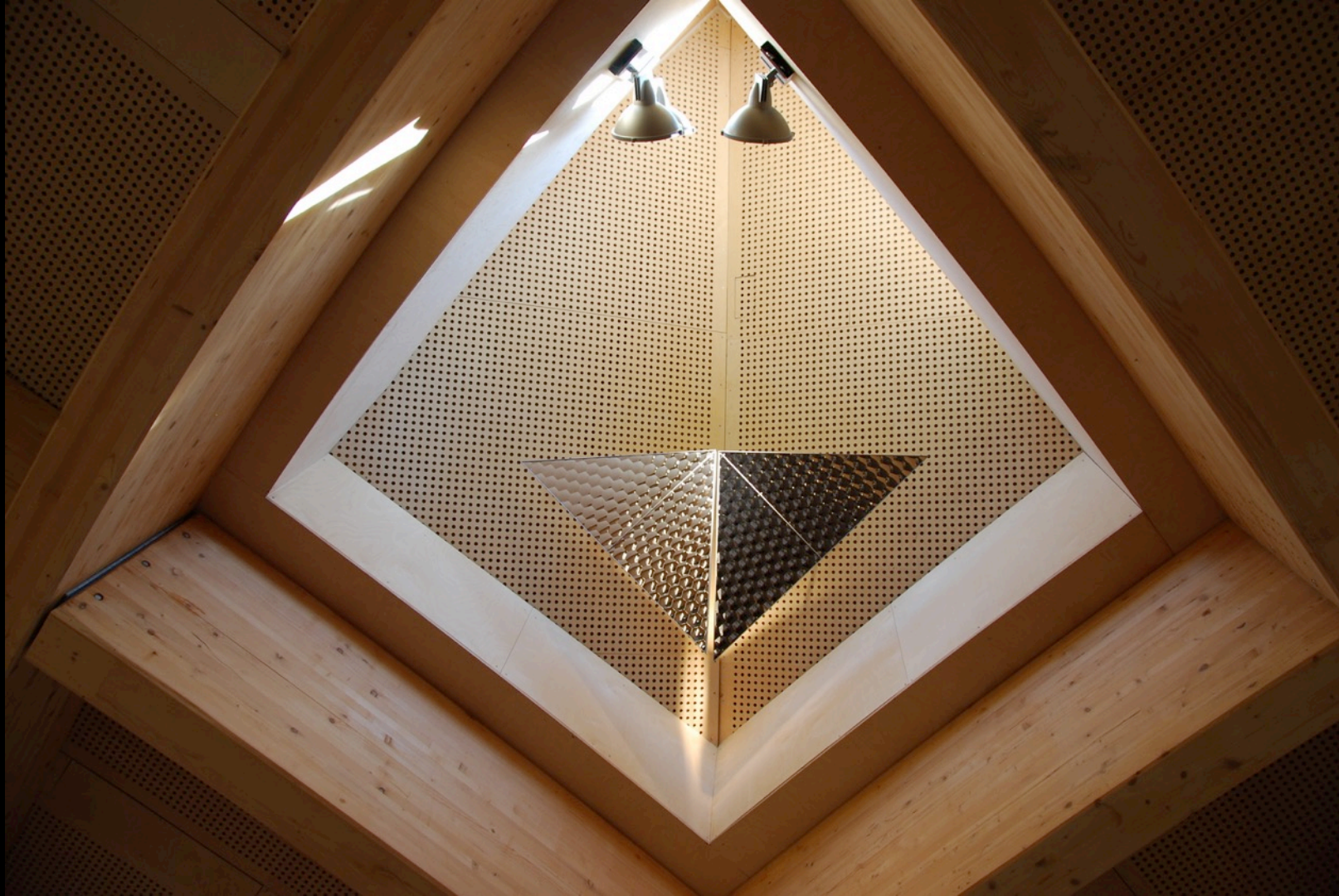






































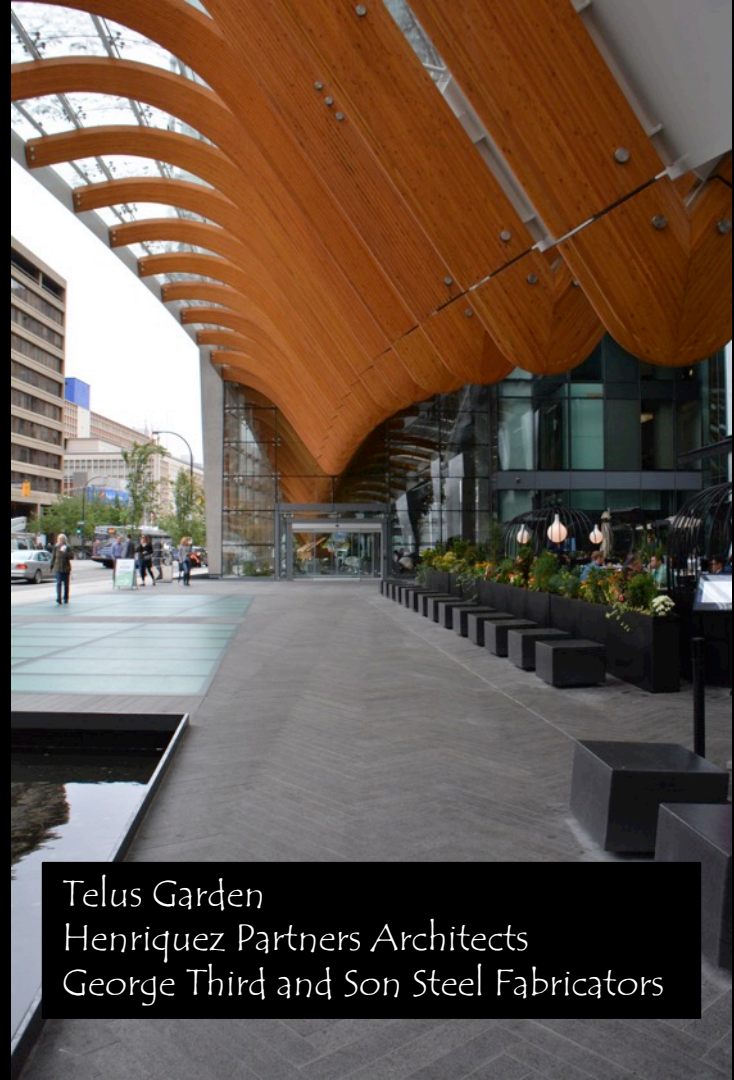












Telus Garden
Henriquez Partners Architects
George Third and Son Steel Fabricators



















The Nest – UBC Campus Centre
Dialog (HBBH) and BH Architects





Welcome
to the Nest!



Welcome
to the Nest!

















CIRS (Center for Interactive
Research on Sustainability)
University of British Columbia
Perkins + Will






















Earth Sciences Building
University of British Columbia
Vancouver, BC
Perkins + Will
2012



 **Earth Sciences
Building (ESB)**

Earth, Ocean and Atmospheric Sciences

Faculty of Science Dean's Office

2207 Main Mall





























Scarborough Civic Centre Library
LGA Architectural Partners and Philip H.
Carter Architects

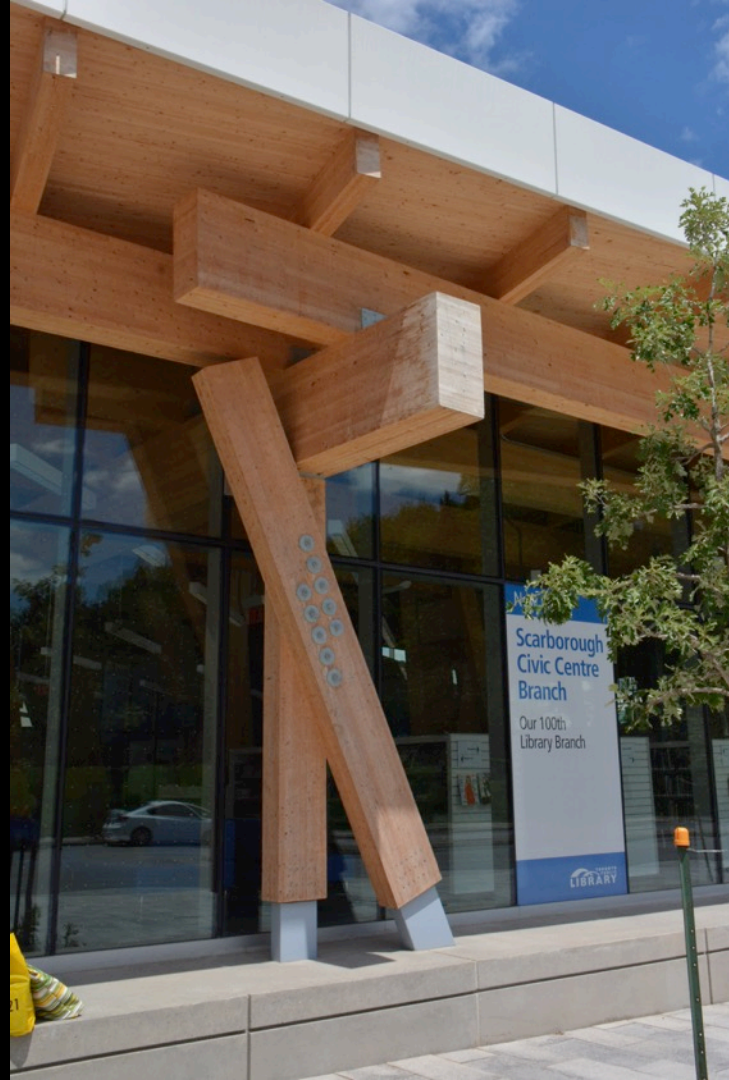





























JUL/2/15
1:22:05

TORONTO PUBLIC LIBRARY
Scarborough Civic Centre
156 Borough Drive

Scarborough Civic Centre Branch
156 Borough Drive



A photograph of the Richmond City Hall building in Richmond, BC. The building is a modern structure with a prominent glass facade and a central tower section. A flag is flying from the top of the tower. In the foreground, there is a street with several cars and two cyclists. The sky is blue with some clouds, and the sun is visible, creating a lens flare effect. The overall scene is a typical urban street view.

Richmond City Hall
Richmond, BC
KPMB with Hotson Bakker
2000














The image shows a low-angle, upward-looking view of a large, intricate wooden truss system. The structure is composed of numerous light-colored wooden beams and supports, creating a complex geometric pattern. A large skylight is visible at the top, allowing natural light to illuminate the interior. The overall aesthetic is modern and organic, emphasizing the natural texture and color of the wood.

Hult Center for the Performing Arts
Eugene, Oregon, USA
Hardy Holzman Pfeiffer Associates
1982

















Squamish Lil'wat Cultural Centre
Whistler, BC
Formline and Ratio Architecture
2008



TOURS
THEATRE
GIFT SHOP
CAFÉ

Aboriginal Museum



Aboriginal Museum
FOODS
THEATRE
GIFT SHOP
CAFE

Stwǎwǎmesh Lilwat7ul  Cultural Centre












Squamish Indian Band
CULTURAL CENTRE











































Ti'oktawen Lom
LONGHOUSE








Transit Terminal
Yufuin, Japan







A photograph of a modern retail store in Yufuin, Japan. The building features a prominent glass facade with a dark wooden frame. The interior is visible through the glass, showing shelves filled with various ceramic and pottery items. A large white flower-shaped decoration is visible on the left side of the glass. The store is surrounded by lush greenery and potted plants in the foreground. The sky is overcast.

Retail Store
Yufuin, Japan













Visitor Centre
Soo, Japan











A photograph of the Metropol Parasol in Seville, Spain, at night. The structure is a large, white, lattice-like canopy that resembles a giant umbrella or parasol. It is illuminated from below with blue light, highlighting its intricate geometric structure. The canopy is supported by a central, thick, white pillar. In the foreground, a paved plaza is visible with a few people walking. In the background, traditional Spanish buildings with balconies are visible under a dark sky. The overall scene is a blend of modern architecture and historic urban context.

Metropol Parasol
Seville, Spain
Jurgen Mayer
2011









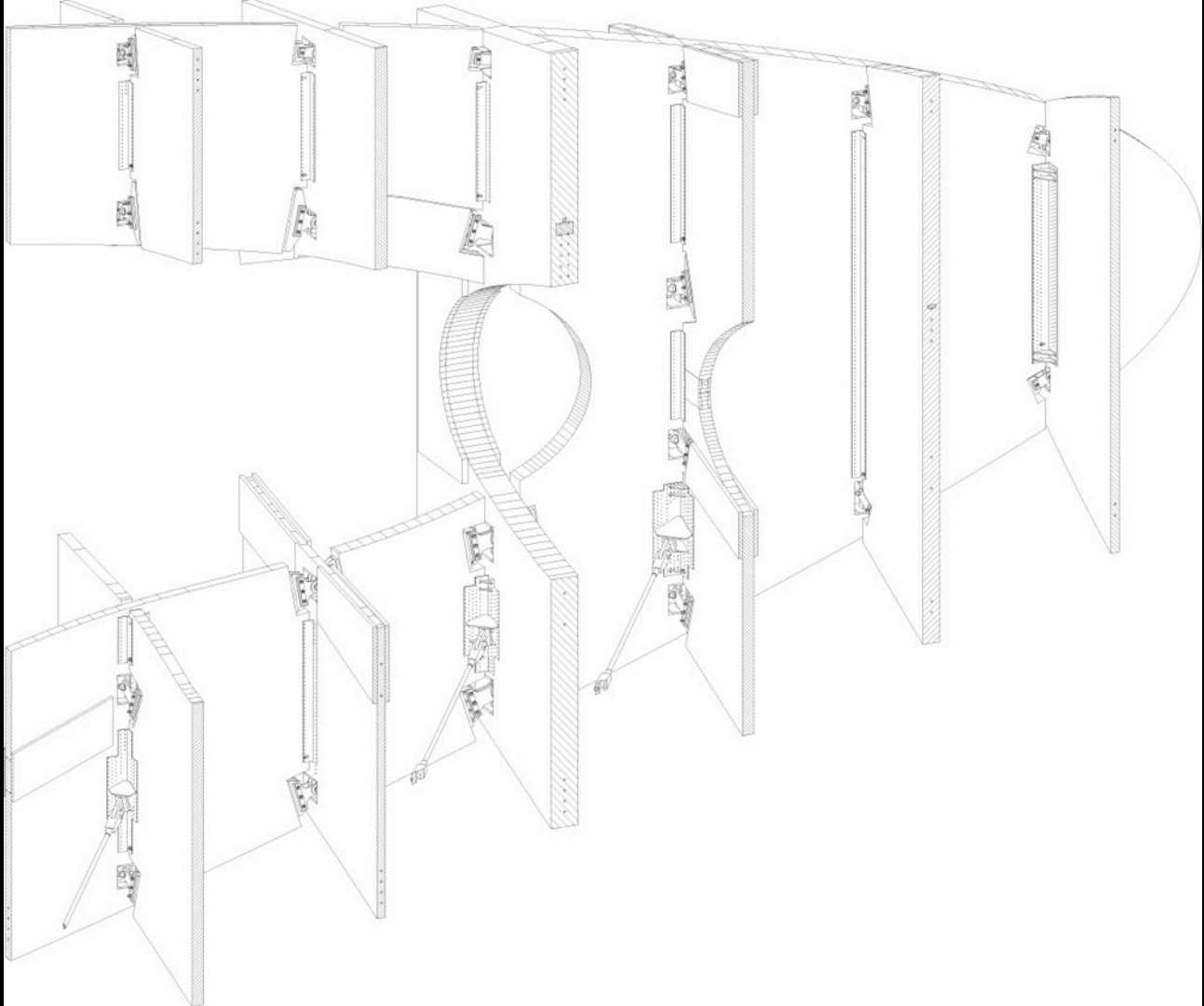




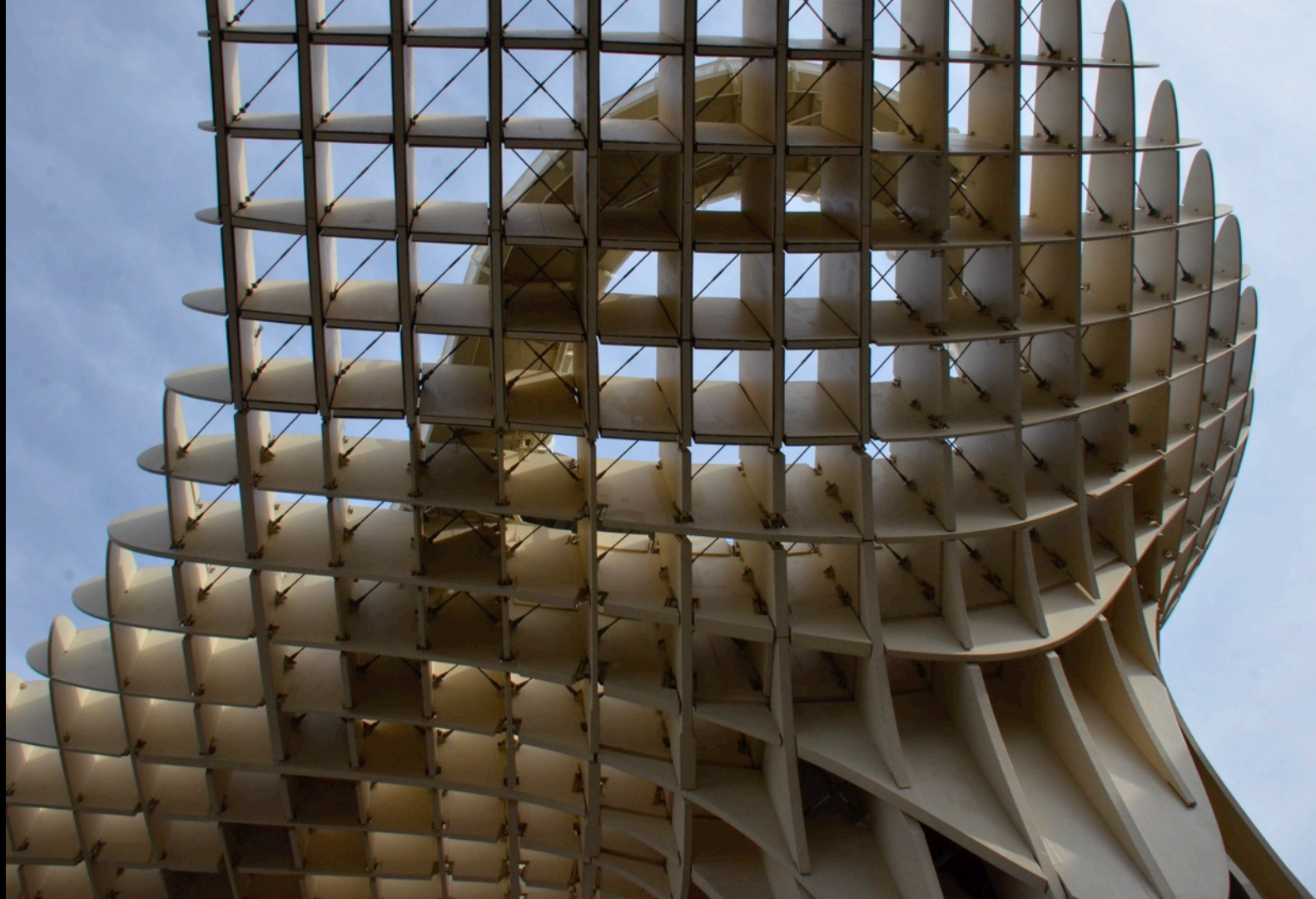


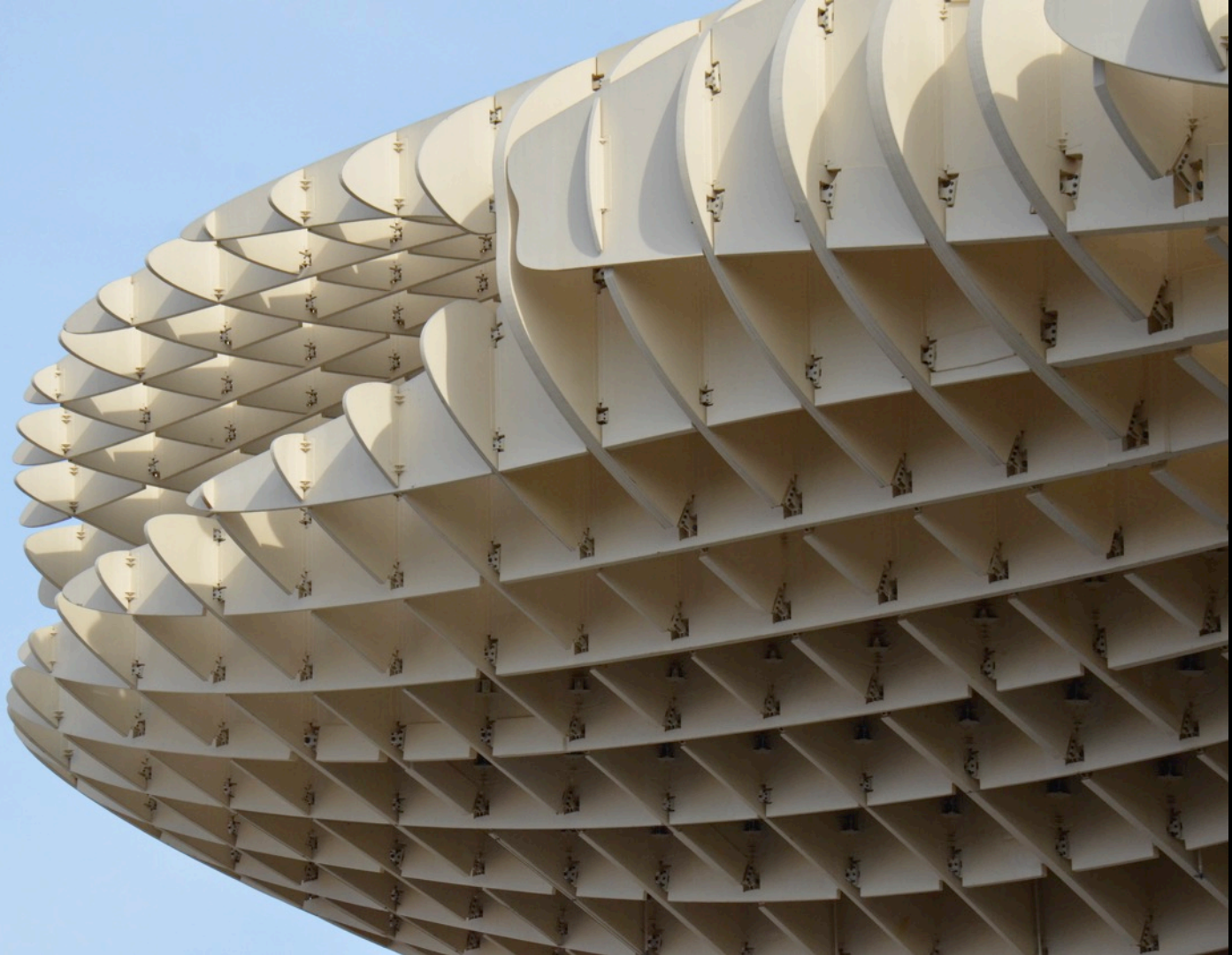










































German Chinese Pavilion
Shanghai Expo 2010
Markus Heinsdorff



行之家
DEUTSCH-CHINESE HAUSE











DEUTSCH-CHINESISCHES HAUS
GERMAN-CHINESE HOUSE

德中同行之家





德中同行之家

DEUTSCH-CHINESISCHES HAUS
GERMAN-CHINESE HOUSE

